



1129 Marsh Street

Property Description:

City: San Luis Obispo, California

Size: 1460 Square Feet

Price: \$2.65/Square Foot, Gross

Type: Office

Zoning: O

Notes: A well-located downtown Victorian with on-site parking.
Landlord is renovating the suite with new carpet and paint.

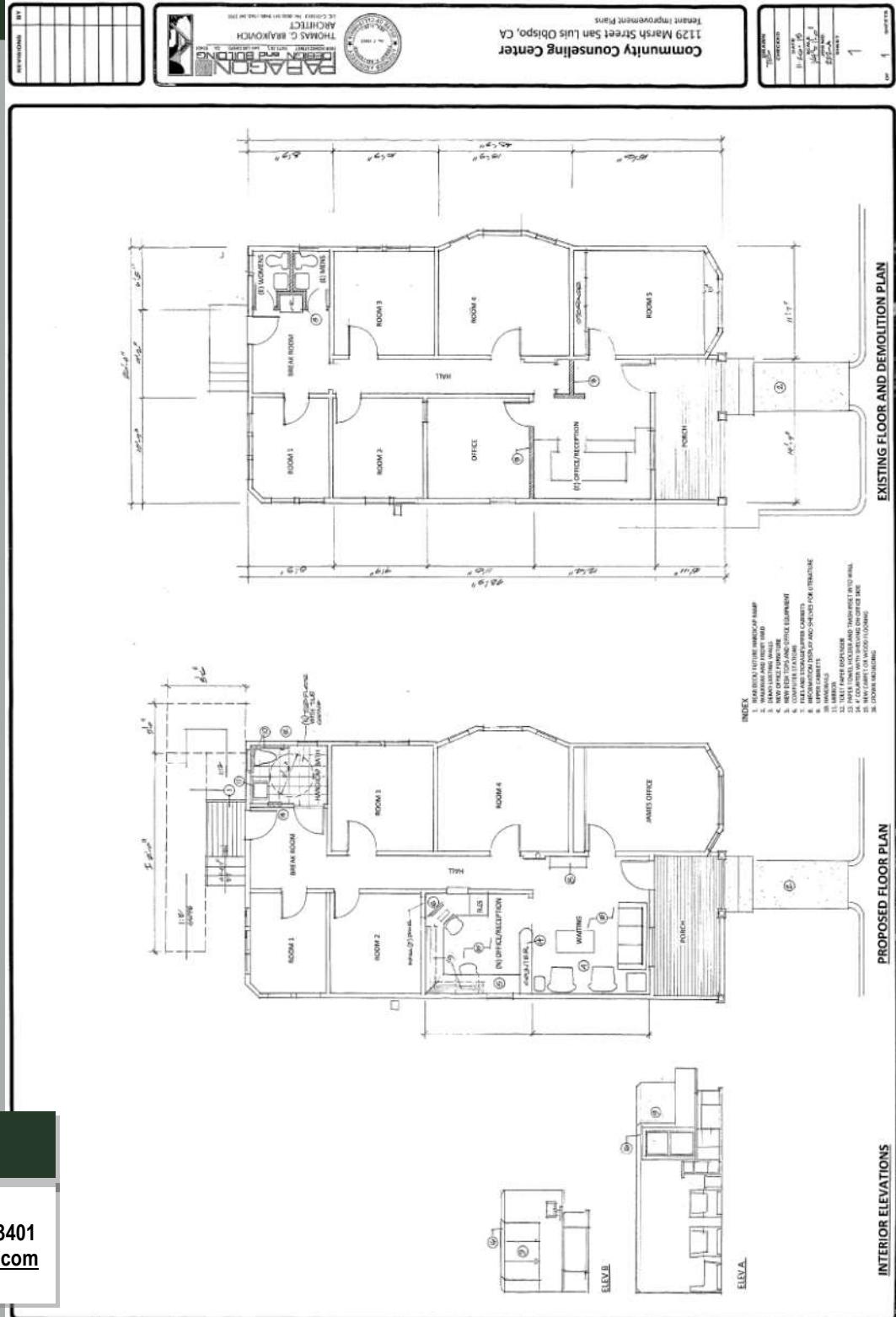
MARK ANDERSON
DEREK SENN

805.543.1400
798 PALM ST, SLO, CA 93401
AndersonCommercialRE.com
DRE #00944530

ANDERSON COMMERCIAL

REAL ESTATE SERVICES

1129 MARSH



MARK ANDERSON
DEREK SENN

805.543.1400
798 PALM ST, SLO, CA 93401
AndersonCommercialRE.com
DRE #00944530