



1150 Osos Street, Suite 202 & 206

Property Description:

City: San Luis Obispo, California

Size: 2,867 SF (includes 147 SF of storage area)

Price: \$2.10/SF, NNN

Type: Office

Parking: Six (6) on-site reserved spaces

Notes: The **Merrill Lynch Building** is located in the heart of Downtown San Luis Obispo. This is a rare opportunity to lease a very nice office suite in one of the most iconic buildings in San Luis Obispo. The NNN's include the heat and air conditioning. The suite is in great condition and has perimeter offices with access to the balcony along Osos Street.

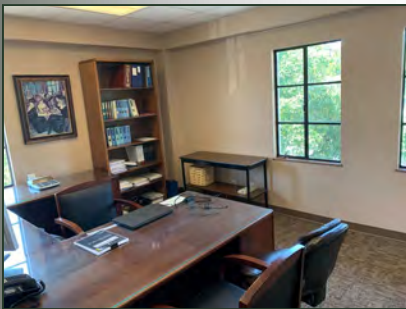
MARK ANDERSON
DEREK SENN

805.543.1400
798 PALM ST, SLO, CA 93401
AndersonCommercialRE.com
DRE #00944530

ANDERSON COMMERCIAL

REAL ESTATE SERVICES

1150 OSOS #202 & #206



MARK ANDERSON
DEREK SENN

805.543.1400
798 PALM ST, SLO, CA 93401
AndersonCommercialRE.com
DRE #00944530