



## 225 Posada Lane, Templeton

### Property Description:

- City: Templeton, California  
Size: 8,264 SF, consisting of 5 suites ranging from 1,441 to 1,882 SF  
Price: \$1.85/Square Foot, NNN  
Type: Medical Office  
Notes: Remodeled medical suites available. Located directly across from Twin Cities Hospital.

**DEREK SENN**

805.543.1400  
798 PALM ST, SLO, CA 93401  
[AndersonCommercialRE.com](http://AndersonCommercialRE.com)  
DRE #001252131

# ANDERSON COMMERCIAL

---

REAL ESTATE SERVICES

# 225 POSADA



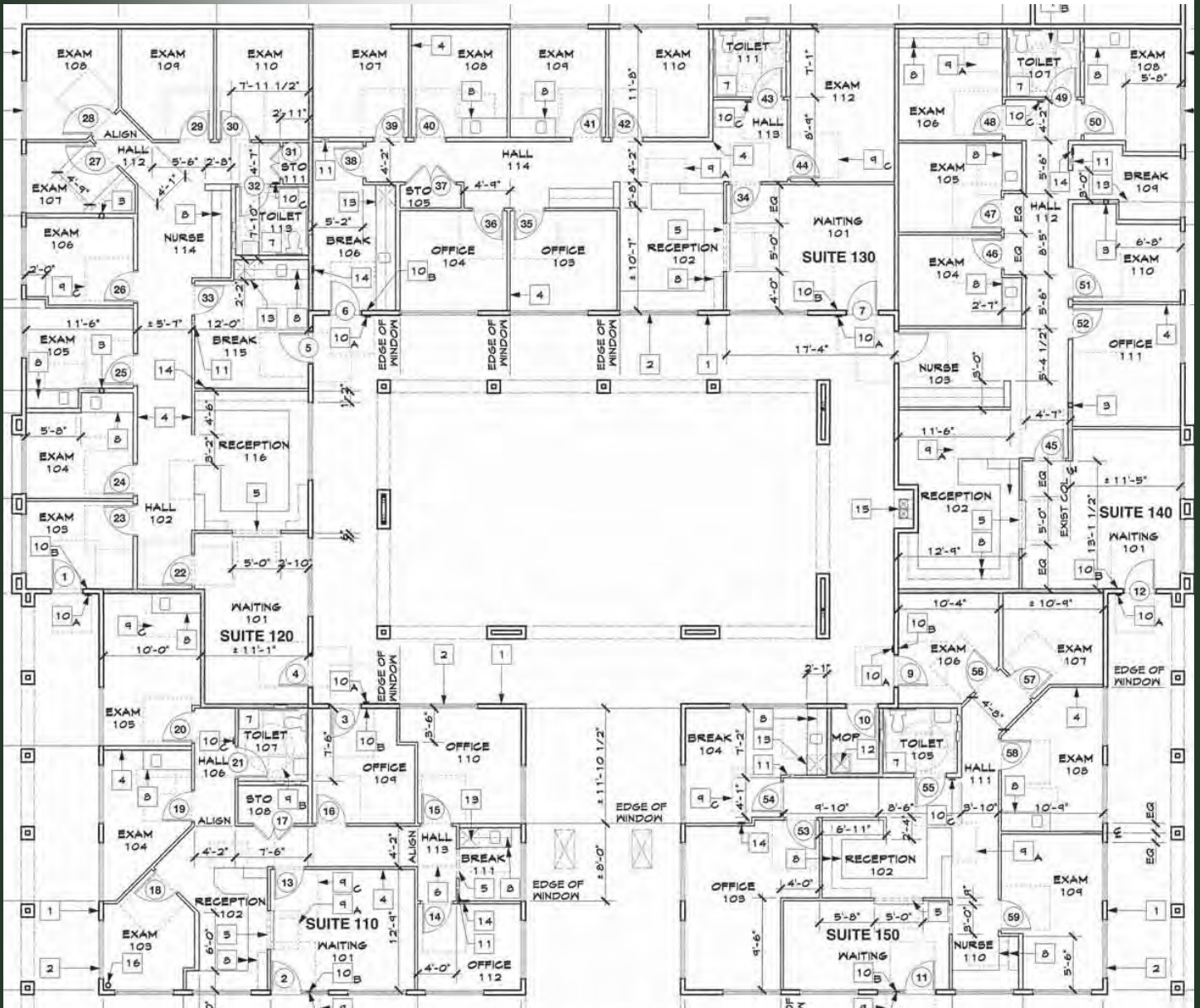
**DEREK SENN**

805.543.1400  
798 PALM ST, SLO, CA 93401  
[AndersonCommercialRE.com](http://AndersonCommercialRE.com)  
DRE #001252131

# ANDERSON COMMERCIAL

REAL ESTATE SERVICES

# 225 POSADA



**DEREK SENN**

805.543.1400  
798 PALM ST, SLO, CA 93401  
[AndersonCommercialRE.com](http://AndersonCommercialRE.com)  
DRE #001252131

# ANDERSON COMMERCIAL

---

REAL ESTATE SERVICES

# 225 POSADA



**DEREK SENN**

805.543.1400  
798 PALM ST, SLO, CA 93401  
[AndersonCommercialRE.com](http://AndersonCommercialRE.com)  
DRE #001252131