

# ANDERSON COMMERCIAL REAL ESTATE SERVICES

# FOR LEASE



## 620 California Boulevard Building B, Suite P1

### Property Description:

City: San Luis Obispo, California

Size: 788 Square Feet

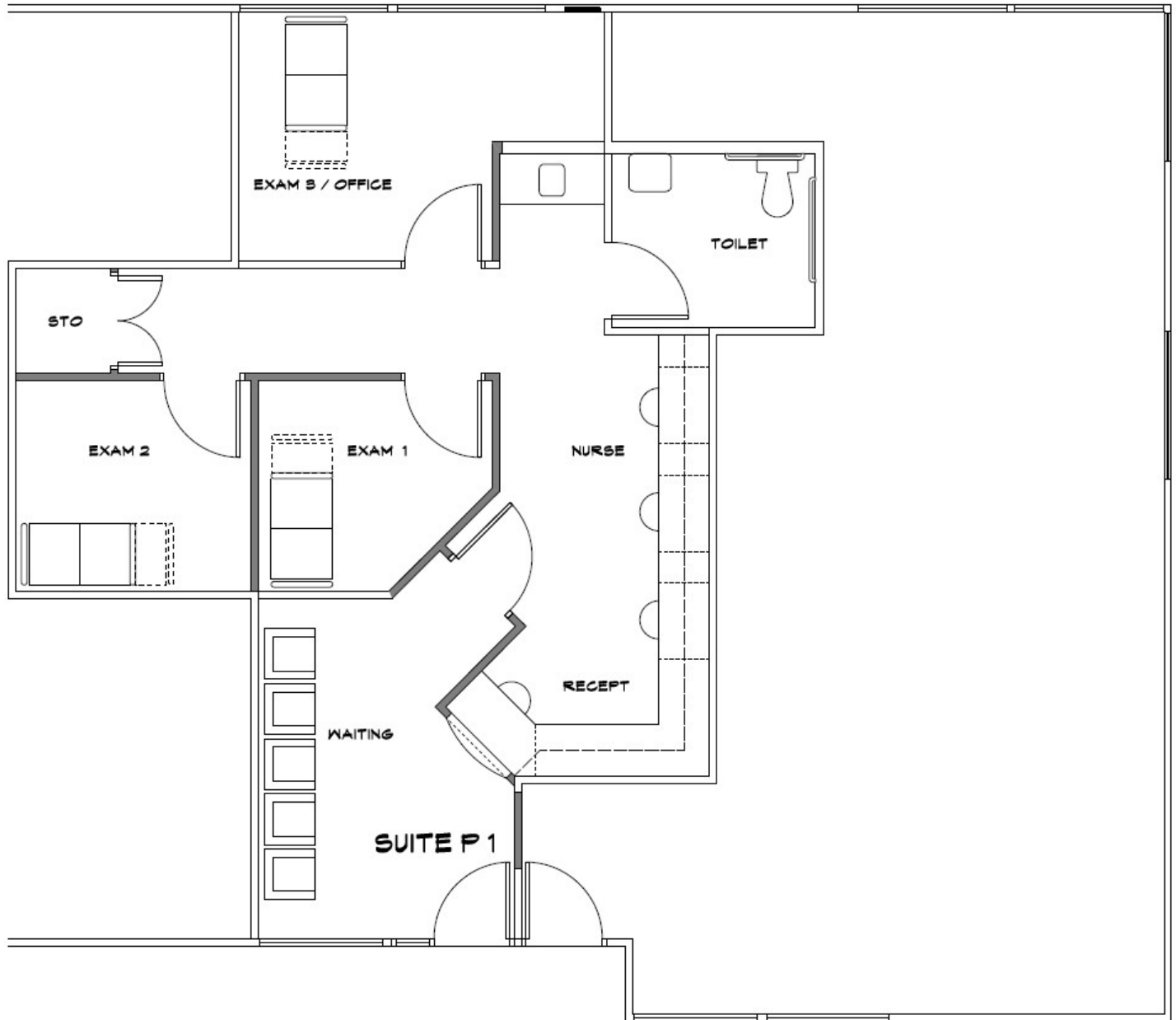
Price: \$2.50/Square Foot, NNN

Type: Medical Office

Notes: Recently improved medical offices in the California Medical Center. Renovations include significant upgrades to the project including exterior paint, roofs, landscaping, lighting, directory and monument signage, ADA upgrades, adding some parking, etc. Construction will be completed in March/April.

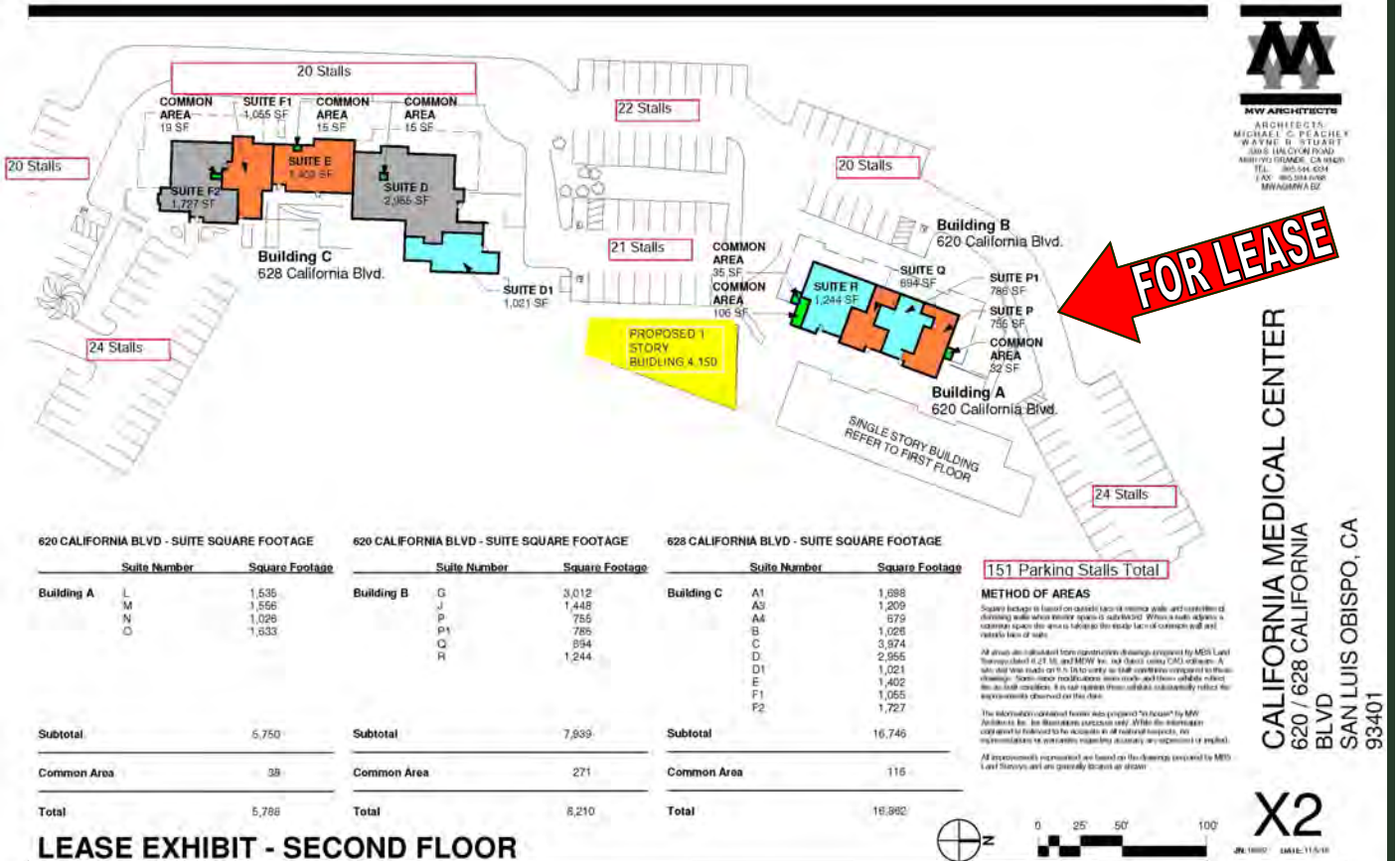
**MARK ANDERSON**

805.543.1400  
798 PALM ST, SLO, CA 93401  
[AndersonCommercialRE.com](http://AndersonCommercialRE.com)  
DRE #00944530



**MARK ANDERSON**

805.543.1400  
798 PALM ST, SLO, CA 93401  
[AndersonCommercialRE.com](http://AndersonCommercialRE.com)  
DRE #00944530



**CALIFORNIA MEDICAL CENTER**  
620 / 628 CALIFORNIA  
BLVD  
SAN LUIS OBISPO, CA  
93401

**MARK ANDERSON**  
805.543.1400  
798 PALM ST, SLO, CA 93401  
[AndersonCommercialRE.com](http://AndersonCommercialRE.com)  
DRE #00944530