



733 Marsh Street, Basement Suite

Property Description:

City: San Luis Obispo, California

Size: 3557 SF (1568 SF Office & 1989 SF Work Area/Storage)

Price: \$0.70/SF, NNN

Type: Professional Office

Parking: On-Site

Notes: Recently renovated office space located in Downtown SLO with on-site parking. This suite has been improved into nice office space and has elevator access. Other tenants in the project include; Charles Schwab, Coast Hills Credit Union, and Exact Bid.

MARK ANDERSON

805.543.1400
798 PALM ST, SLO, CA 93401
AndersonCommercialRE.com
DRE #00944530

ANDERSON COMMERCIAL

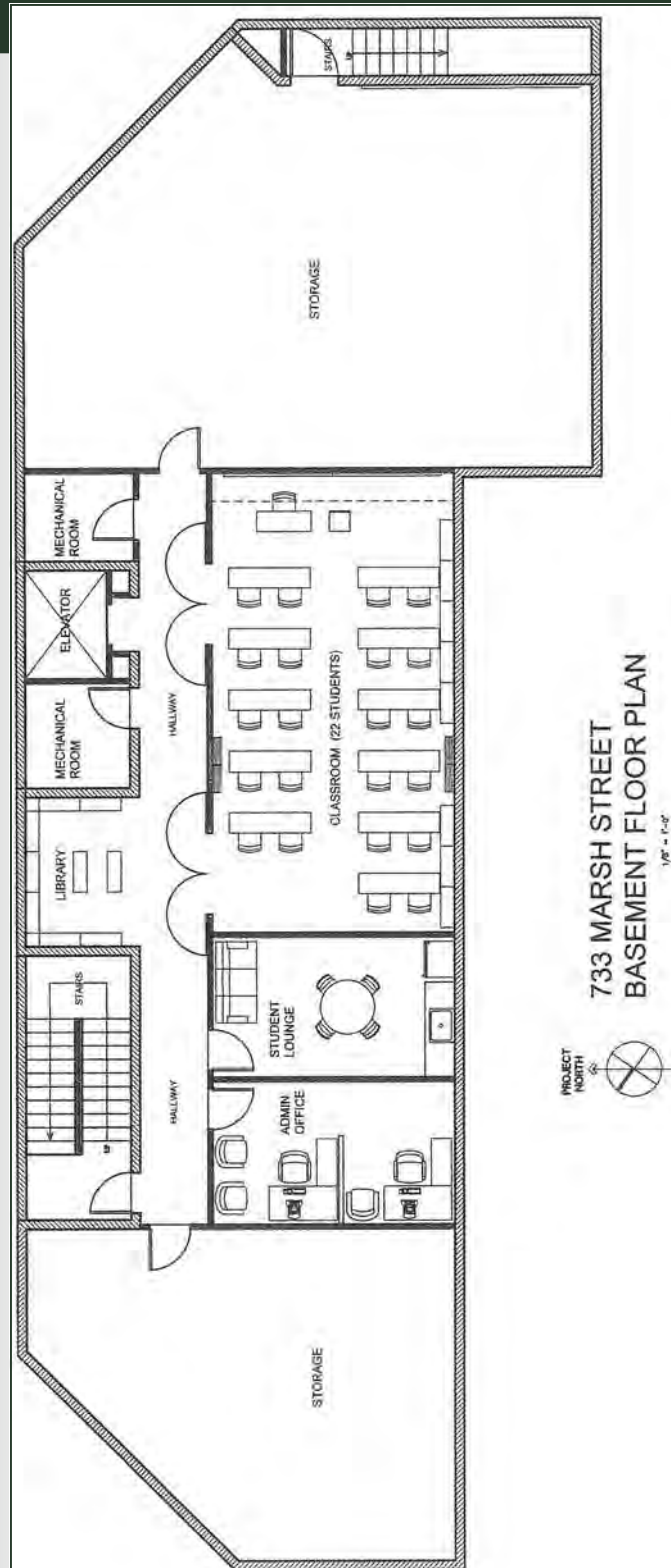
REAL ESTATE SERVICES

733 MARSH #BASEMENT



MARK ANDERSON

805.543.1400
798 PALM ST, SLO, CA 93401
AndersonCommercialRE.com
DRE #00944530



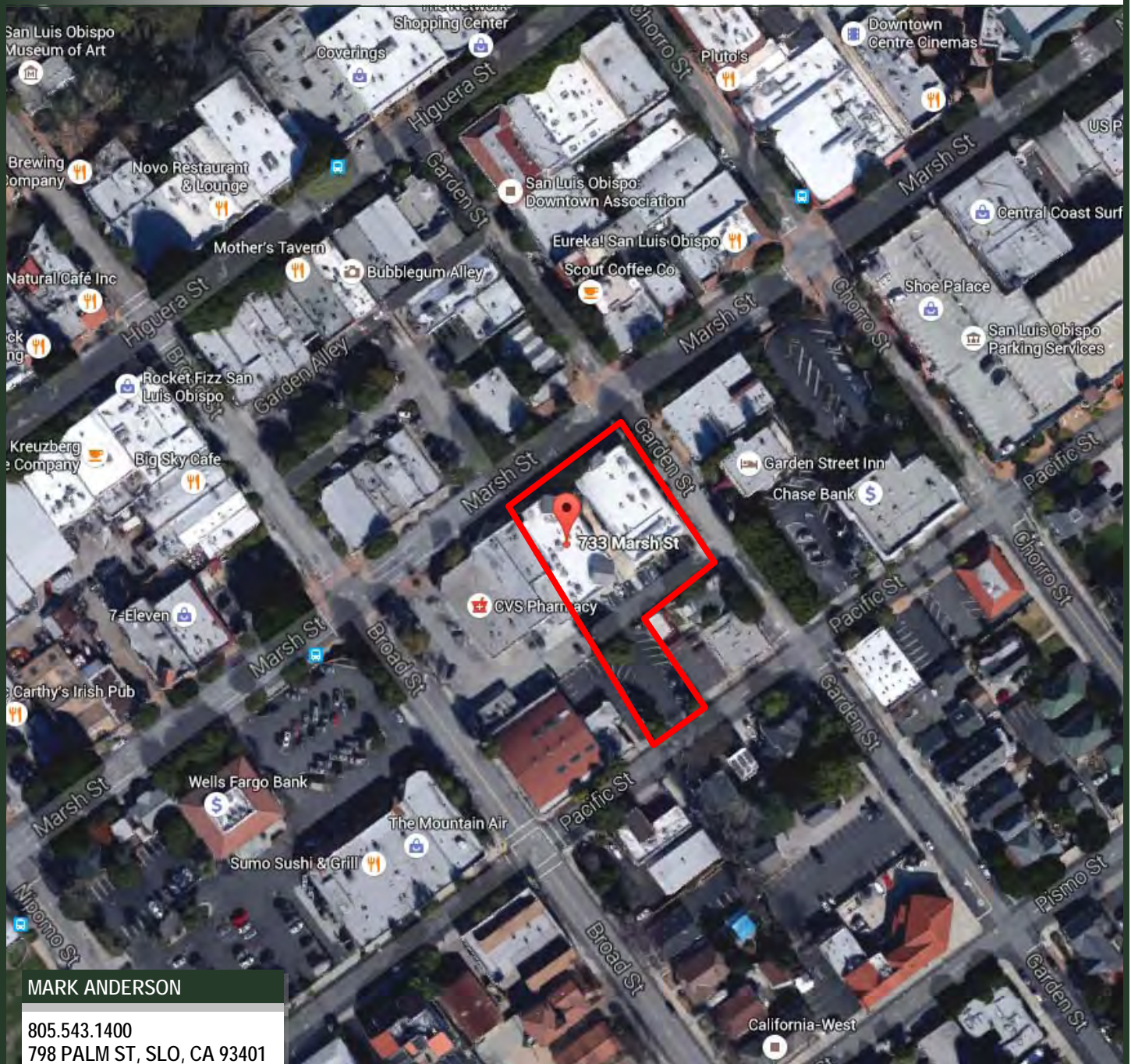
MARK ANDERSON

805.543.1400
798 PALM ST, SLO, CA 93401
AndersonCommercialRE.com
DRE #00944530

ANDERSON COMMERCIAL

REAL ESTATE SERVICES

733 MARSH #BASEMENT



MARK ANDERSON

805.543.1400
798 PALM ST, SLO, CA 93401
AndersonCommercialRE.com
DRE #00944530