



75 Higuera Street, Suite 240
“Pacific Coast Center”

Property Description:

City: San Luis Obispo, California

Size: 4,316 Square Feet

Price: \$1.60/Square Foot, Gross

Type: Office

Notes: The **Pacific Coast Center** is centrally located commercial center at the intersection of Madonna Road & S. Higuera Street. Suite 240 is a second floor space with seven private offices, a conference room, server room, two restrooms, kitchenette, and open space. Owner may install an elevator if required (\$2.00/SF, Gross)

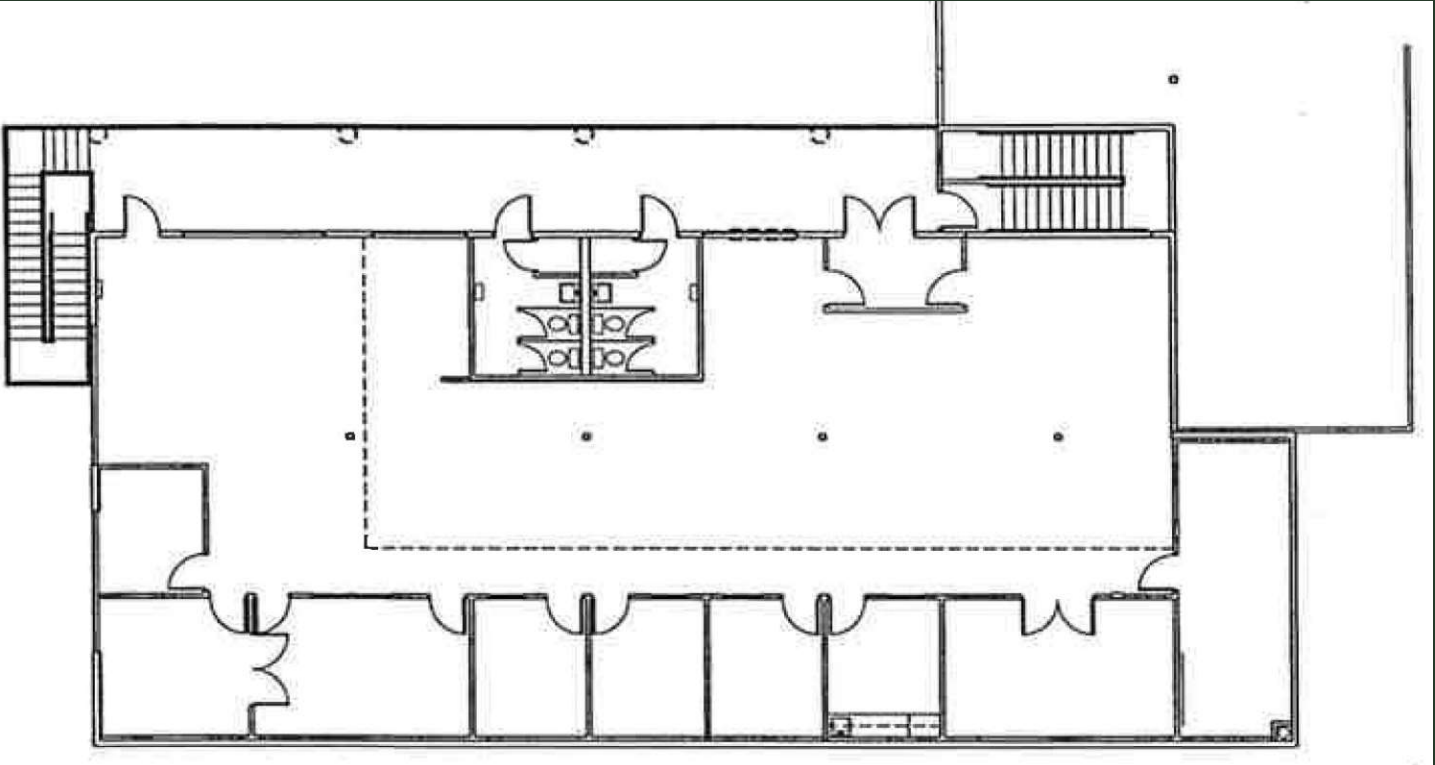
MARK ANDERSON
DEREK SENN

805.543.1400
798 PALM ST, SLO, CA 93401
AndersonCommercialRE.com
DRE #00944530

ANDERSON COMMERCIAL

REAL ESTATE SERVICES

75 HIGUERA #240



MARK ANDERSON
DEREK SENN

805.543.1400
798 PALM ST, SLO, CA 93401
AndersonCommercialRE.com
DRE #00944530