

ANDERSON COMMERCIAL

REAL ESTATE SERVICES

FOR LEASE OR BUILD TO SUIT



East Airport Lot 24 (Tract 2368)

Property Description:

City: San Luis Obispo, California

Size: 1.02 Acres

Price: TBD

Type: Ground Lease

Notes: The available lot is a corner site with Broad Street/Hwy 227 visibility. Given the lot's County zoning and proximity to densely populated neighborhoods, the site could be improved as a drive-thru. It can be leased as a long term ground lease to accommodate your company's use.

MARK ANDERSON

805.543.1400
798 PALM ST, SLO, CA 93401
AndersonCommercialRE.com
DRE #00944530

Join the growing number of companies locating to the East Airport Tract (across from SLO Airport); Rosetta, SRAM, PG&E, Cloud Inc, Arsenal Equipment, Family Care Network, Ewing, Arroyo Engineering, and Smart 72. **CALL FOR MORE DETAILS.**

ANDERSON COMMERCIAL

REAL ESTATE SERVICES

EAST AIRPORT LOT 24

JOIN THE GROWING NUMBER OF COMPANIES LOCATING TO THE EAST AIRPORT TRACT.



Airport

MARK ANDERSON
805.543.1400
798 PALM ST, SLO, CA 93401
AndersonCommercialRE.com
DRE #00944530

INFORMATION CONTAINED HEREIN HAS BEEN OBTAINED FROM SOURCES WE DEEM RELIABLE. WHILE WE HAVE NO REASON TO DOUBT ITS ACCURACY WE DO NOT GUARANTEE IT.

ANDERSON COMMERCIAL

REAL ESTATE SERVICES

EAST AIRPORT LOT 24



MARK ANDERSON

805.543.1400
798 PALM ST, SLO, CA 93401
AndersonCommercialRE.com
DRE #00944530



North Elevation



South Elevation (view from Kendall Road)



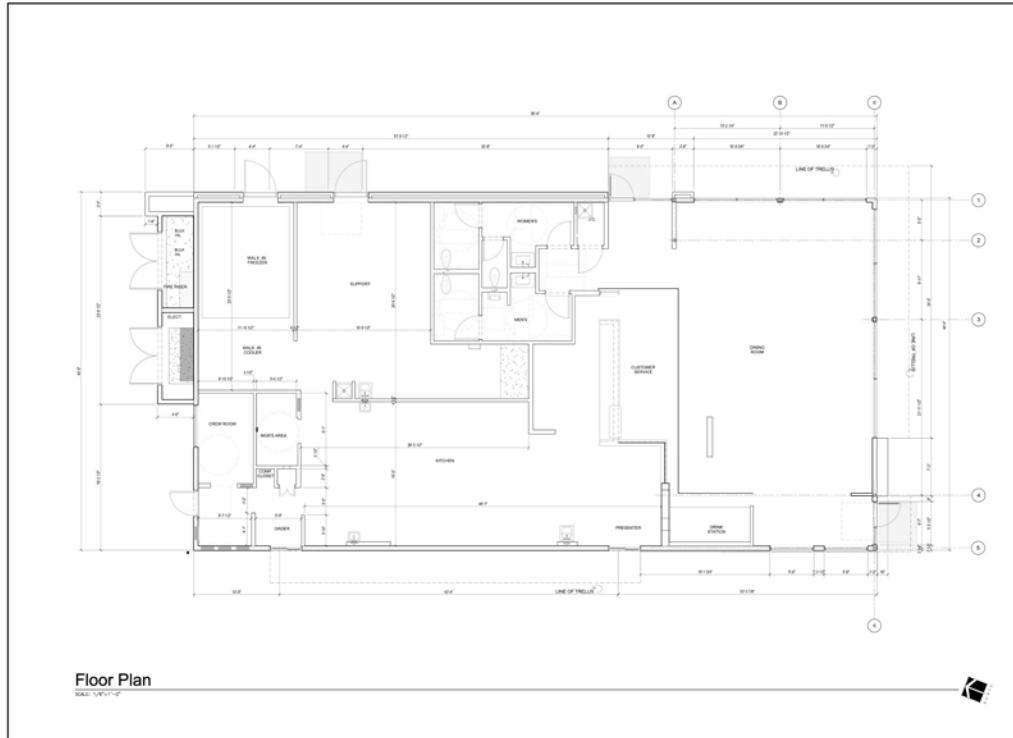
East Elevation



West Elevation (view from Broad Street)

MARK ANDERSON

805.543.1400
798 PALM ST, SLO, CA 93401
AndersonCommercialRE.com
DRE #00944530



g r
+ d

peris architecture + design
1000 KONDAL ROAD
EAST AIRPORT
COMMERCIAL PARK
SAN LUIS OBISPO, CA 95047
TEL: 805.772.1144
WWW.PERISARCHITECTURE.COM
REGISTERED ARCHITECTS IN CALIFORNIA

CONTRACT NO. 19-0001

PROJECT
New Restaurant Bldg
1000 Kondal Road
East Airport
Commercial Park
San Luis Obispo, CA

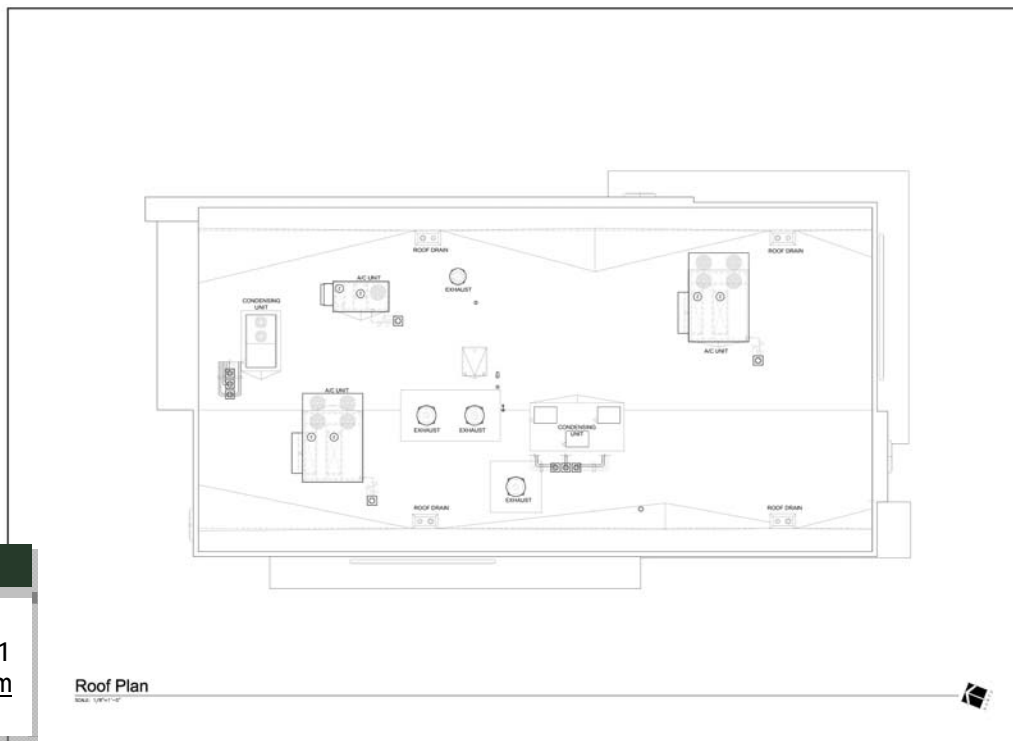
CLIENT/OWNER
Pompe 1, LLC
P.O. Box 1127
Oceano, CA 93475

DATE
Floor Plan

NO.	DESCRIPTION	DATE

SCALE: 1/8" = 1'-0"

A1.1



g r
+ d

peris architecture + design
1000 KONDAL ROAD
EAST AIRPORT
COMMERCIAL PARK
SAN LUIS OBISPO, CA 95047
TEL: 805.772.1144
WWW.PERISARCHITECTURE.COM
REGISTERED ARCHITECTS IN CALIFORNIA

CONTRACT NO. 19-0001

PROJECT
New Restaurant Bldg
1000 Kondal Road
East Airport
Commercial Park
San Luis Obispo, CA

CLIENT/OWNER
Pompe 1, LLC
P.O. Box 1127
Oceano, CA 93475

DATE
Roof Plan

NO.	DESCRIPTION	DATE

SCALE: 1/8" = 1'-0"

A1.2

MARK ANDERSON
805.543.1400
798 PALM ST, SLO, CA 93401
AndersonCommercialRE.com
DRE #00944530