



## Los Osos Valley Road

### Property Description:

City: San Luis Obispo, California  
Size: 13.25 Acres  
Price: \$2,350,000  
APN: 053-161-020  
Zoning: R-1 7.33 Acres +/-  
C/OS 5.92 Acres +/-

CHARLES SENN, SIOR  
DEREK SENN

805.543.1400  
798 PALM ST, SLO, CA 93401  
[AndersonCommercialRE.com](http://AndersonCommercialRE.com)  
DRE #00952817

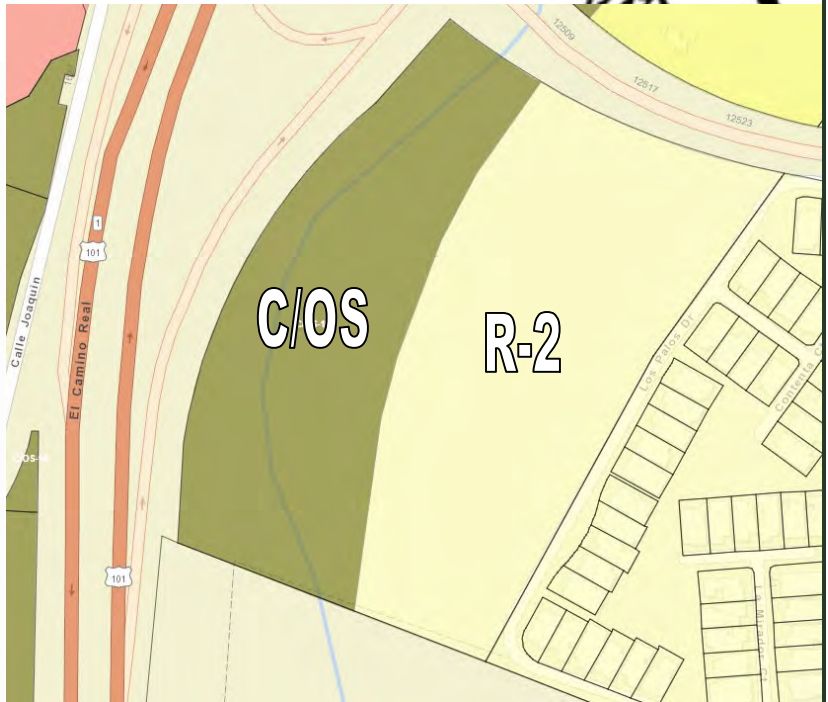
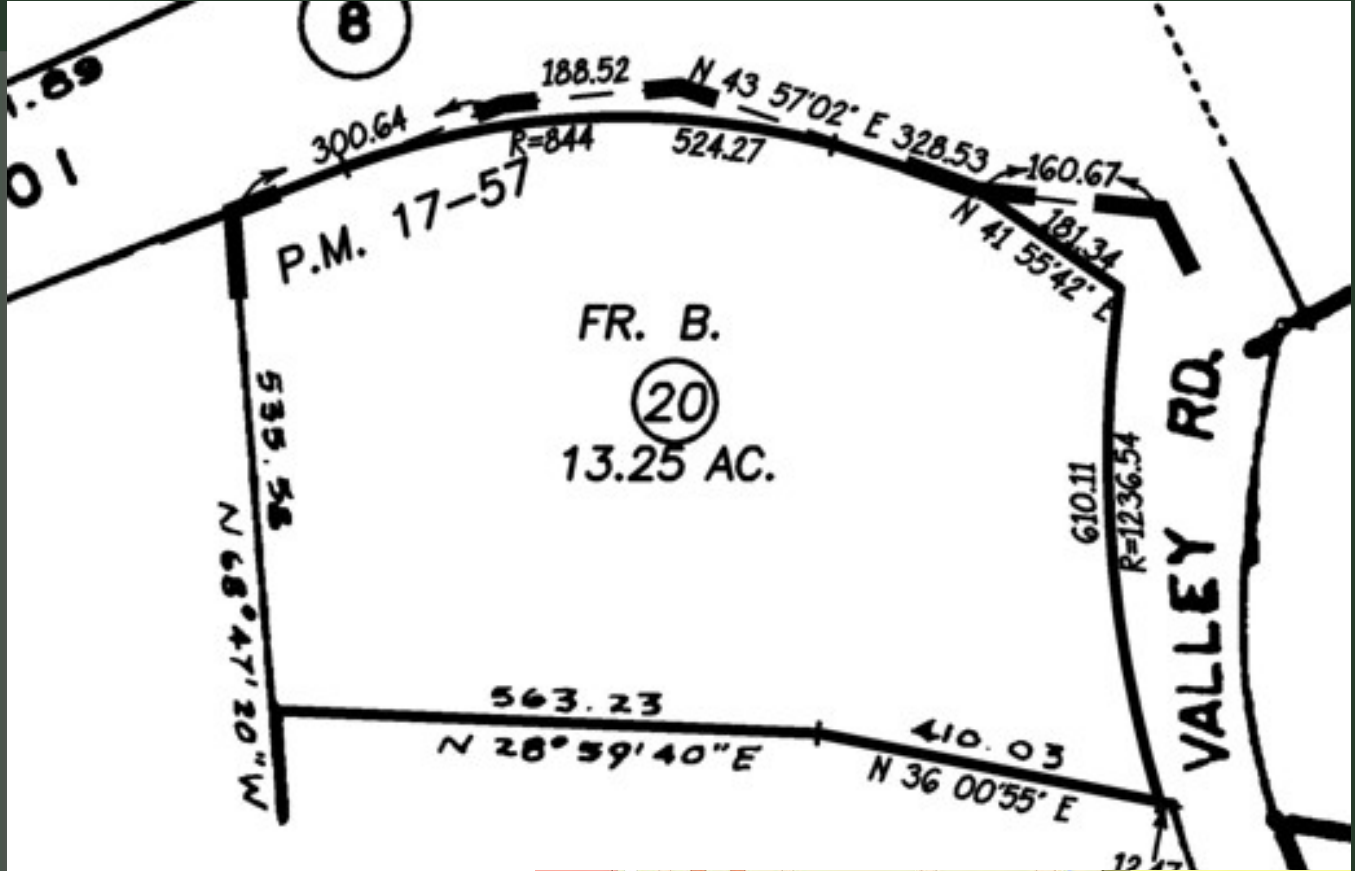
Notes: Ideal development site, adjacent to Los Verdes Park 2, with easy access to highways and shopping.

An additional site across Los Osos Valley Road is also available.

# ANDERSON COMMERCIAL

REAL ESTATE SERVICES

## SAN LUIS OBISPO DEVELOPMENT SITE FOR SALE



CHARLES SENN, SIOR  
DEREK SENN

805.543.1400  
798 PALM ST, SLO, CA 93401  
[AndersonCommercialRE.com](http://AndersonCommercialRE.com)  
DRE #00952817

Two prime infill development sites on Los Osos Valley Road. The North parcel, at 9.93 acres, is zoned R-2/C-OS, while the South parcel, at 13.25 acres, is zoned R-1/C-OS. Both parcels have excellent proximity to shopping amenities and HWY 101. The parcels can be purchased together or separately.

San Luis Obispo, located on the Central Coast between San Francisco and Los Angeles, boasts a world-class university, a quaint downtown, miles of open space and hiking trails, excellent local wines, an educated workforce, close proximity to beaches, and an idyllic climate.



**CHARLES SENN, SIOR**  
**DEREK SENN**

805.543.1400  
798 PALM ST, SLO, CA 93401  
[AndersonCommercialRE.com](http://AndersonCommercialRE.com)  
DRE #00952817

# ANDERSON COMMERCIAL REAL ESTATE SERVICES

## SAN LUIS OBISPO DEVELOPMENT SITE FOR SALE



CHARLES SENN, SIOR  
DEREK SENN

805.543.1400  
798 PALM ST, SLO, CA 93401  
[AndersonCommercialRE.com](http://AndersonCommercialRE.com)  
DRE #00952817