

PRICE REDUCED !!!



Riverside Avenue
Vacant Land

Property Description:

City: Paso Robles, California

APN: 008-021-012

Size: 28,314 Square Feet

Price: **\$289,000** ~~\$297,000~~

Type: Commercial

Zoning: C3

Notes: The available lot fronts the Riverside Drive cul-de-sac and has some Hwy 101 exposure. It is relatively level and has been improved with curb and sidewalk.

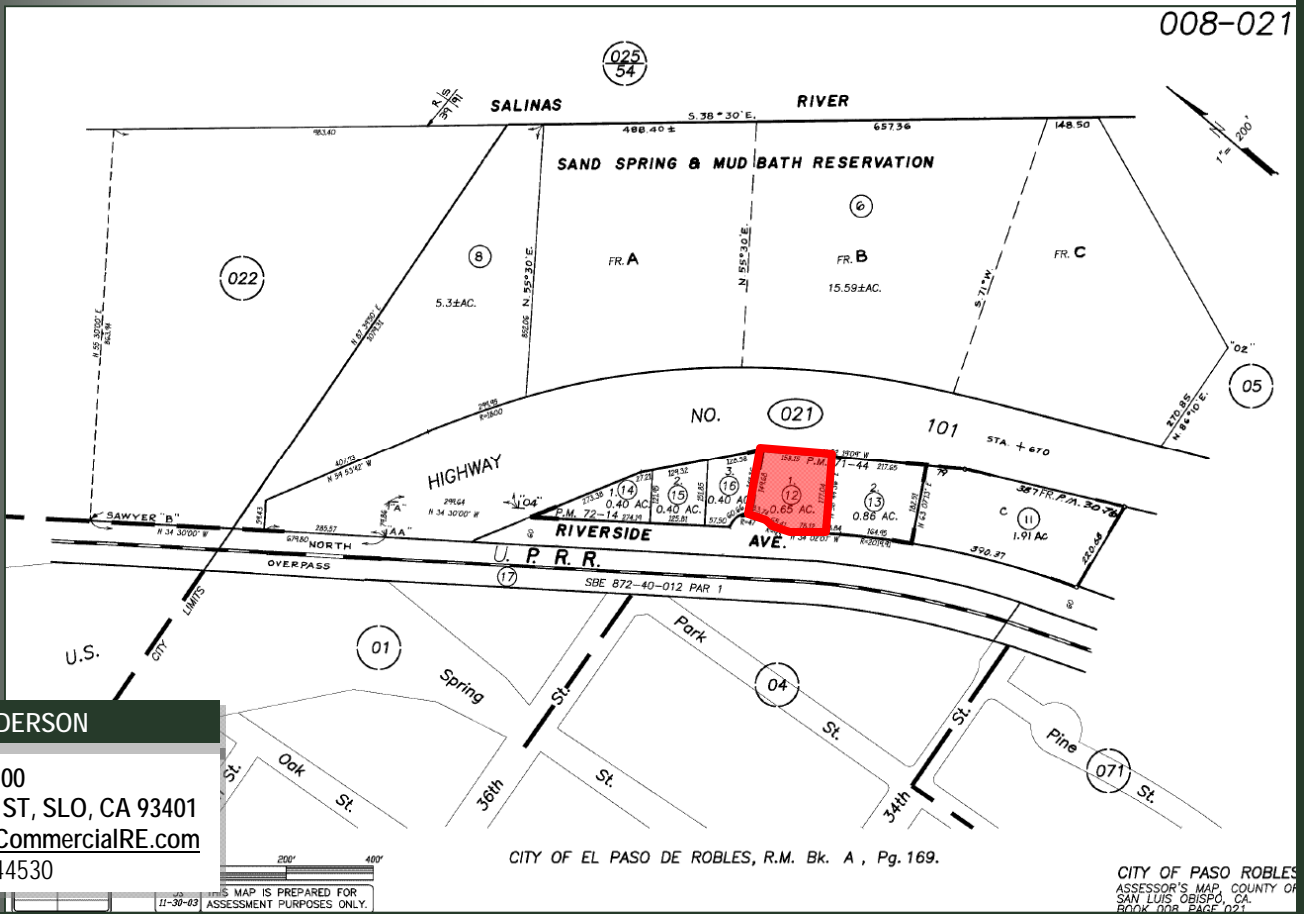
Call with any questions.

MARK ANDERSON

805.543.1400
798 PALM ST, SLO, CA 93401
AndersonCommercialRE.com
DRE #00944530

ANDERSON COMMERCIAL REAL ESTATE SERVICES

RIVERSIDE LAND



MARK ANDERSON
 805.543.1400
 798 PALM ST, SLO, CA 93401
 AndersonCommercialRE.com
 DRE #00944530

CITY OF EL PASO DE ROBLES, R.M. Bk. A, Pg. 169.

CITY OF PASO ROBLES
 ASSESSOR'S MAP, COUNTY OF
 SAN LUIS OBISPO, CA.
 BOOK 109, PAGE 021

INFORMATION CONTAINED HEREIN HAS BEEN OBTAINED FROM SOURCES WE DEEM RELIABLE. WHILE WE HAVE NO REASON TO DOUBT ITS ACCURACY WE DO NOT GUARANTEE IT.