



1118 Palm Street

Property Description:

City: San Luis Obispo, CA

Size: 2,068 Square Feet

Price: \$1,295,000

Type: Office

Notes: The historic Gregg House Victorian was originally a residence and is currently functioning as an office. The ±12,000 SF parcel located adjacent to the downtown core allows for many opportunities, including a potential residential conversion, adding additional units, or continuing to use the structure as an office. There is sufficient space to park the building for medical uses if so desired. The existing floor plan has five private offices, two open work areas, a kitchenette, two restrooms, and a staircase leading to a spacious attic. There is a lease in place until July 31, 2023.

DEREK SENN

805.543.1400
798 PALM ST, SLO, CA 93401
AndersonCommercialRE.com
DRE #001252131

ANDERSON COMMERCIAL

REAL ESTATE SERVICES

1118 PALM



DEREK SENN

805.543.1400
798 PALM ST, SLO, CA 93401
AndersonCommercialRE.com
DRE #001252131

ANDERSON COMMERCIAL

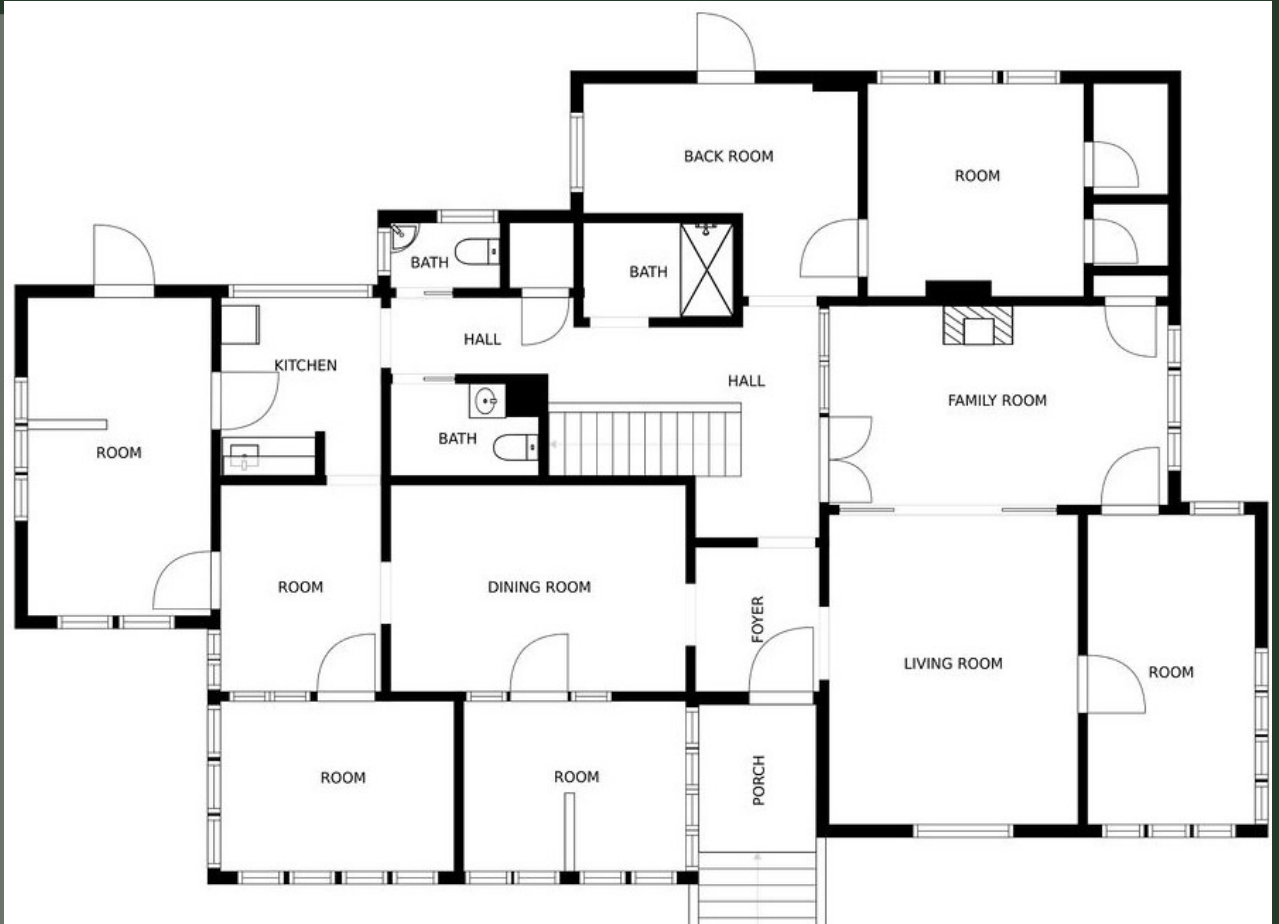
REAL ESTATE SERVICES

1118 PALM

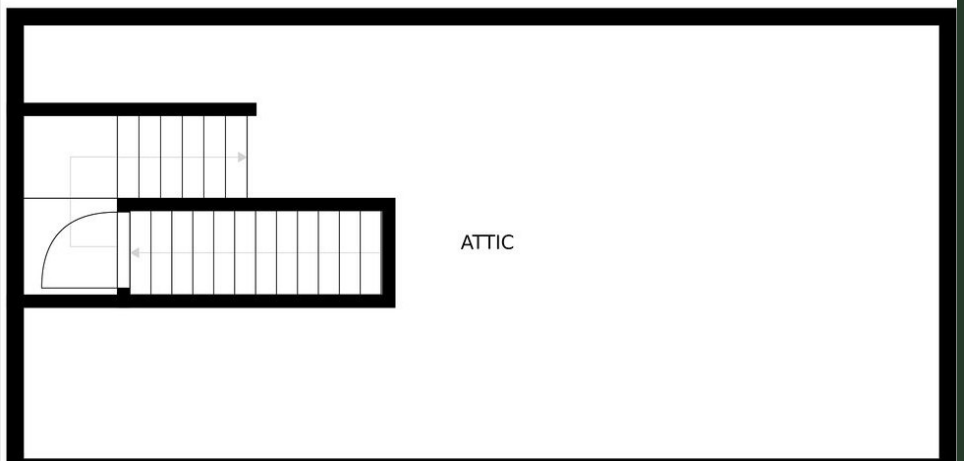


DEREK SENN

805.543.1400
798 PALM ST, SLO, CA 93401
AndersonCommercialRE.com
DRE #001252131



Floor Plan



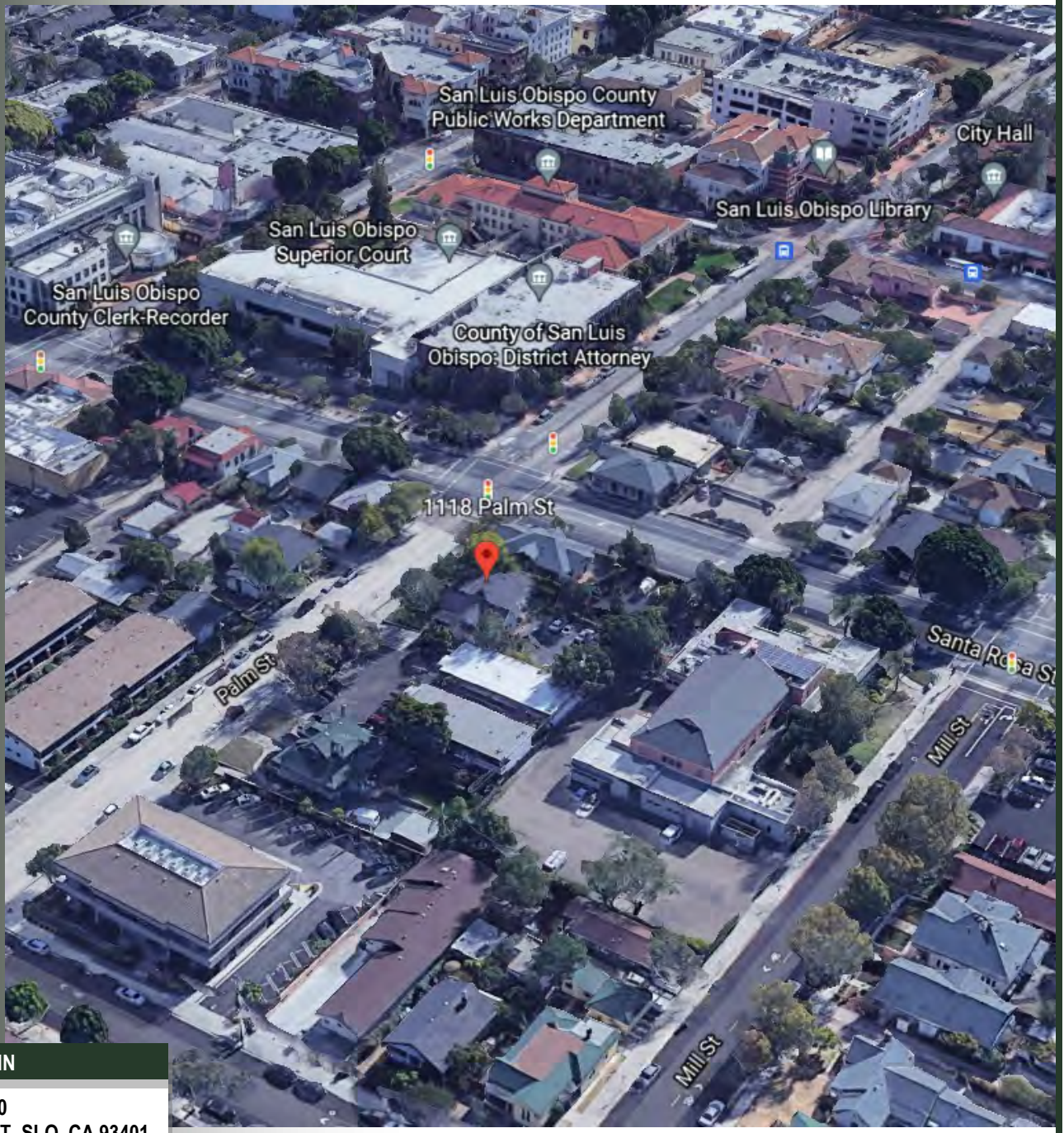
DEREK SENN

805.543.1400
798 PALM ST, SLO, CA 93401
AndersonCommercialRE.com
DRE #001252131

ANDERSON COMMERCIAL

REAL ESTATE SERVICES

1118 PALM



DEREK SENN
805.543.1400
798 PALM ST, SLO, CA 93401
AndersonCommercialRE.com
DRE #001252131