



1035 Peach Street, Suite 301

Property Description:

City: San Luis Obispo, California

Size: 2,219 Square Feet

Price: \$2.50/Square Foot, NNN (\$0.86/SF)

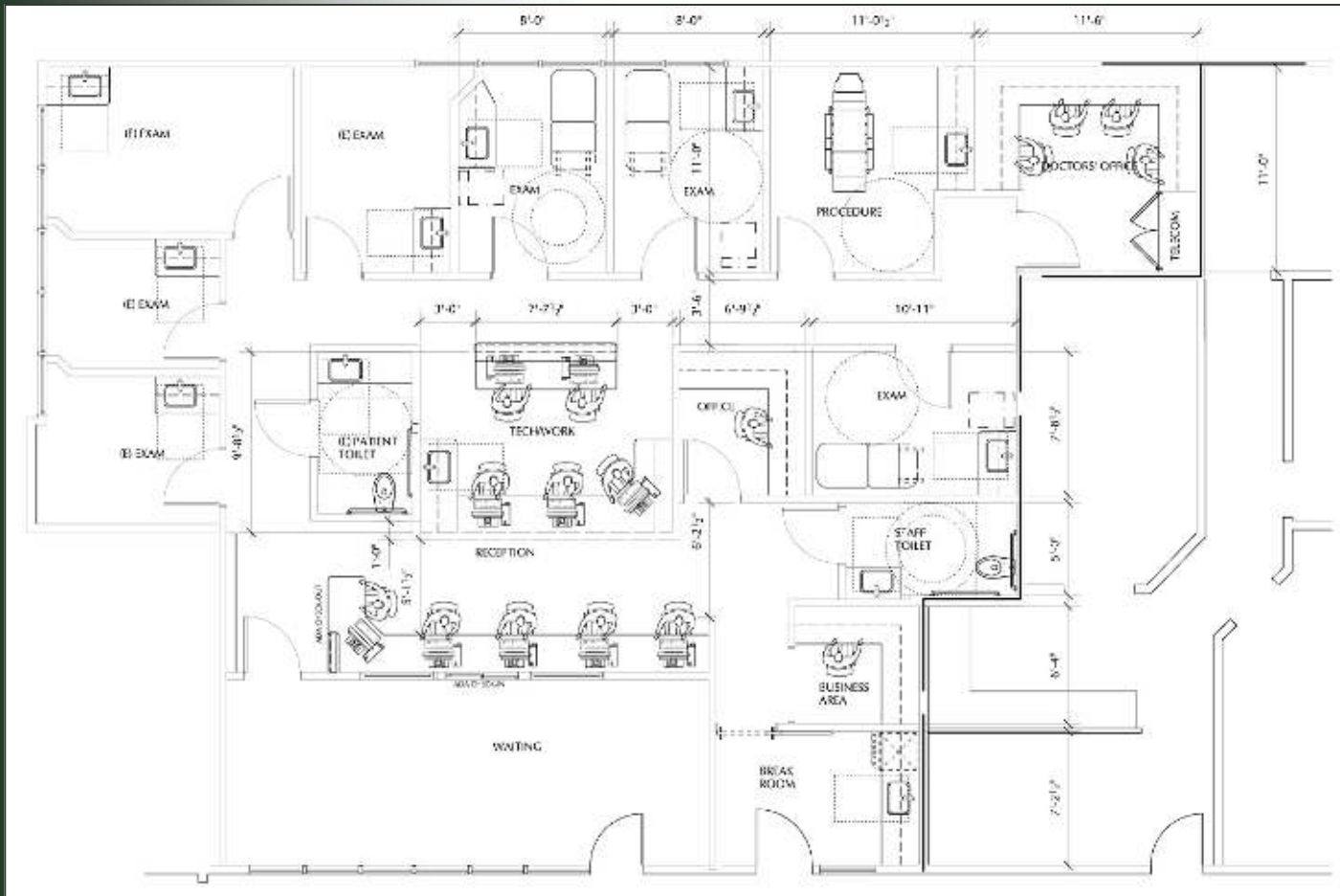
Type: Medical Office

Parking: Eleven (11) reserved spaces

Notes: This recently remodeled third floor, elevator served, medical suite is located near Downtown SLO with easy access to Highway 101. The suite has eight exam rooms, two doctor offices, a large reception/waiting area (with views of Cerro San Luis Mountain), a large nurses' station, kitchenette, and two ADA restrooms.

MARK ANDERSON

805.543.1400
798 PALM ST, SLO, CA 93401
AndersonCommercialRE.com
DRE #00944530



MARK ANDERSON

805.543.1400
798 PALM ST, SLO, CA 93401
AndersonCommercialRE.com
DRE #00944530

ANDERSON COMMERCIAL

REAL ESTATE SERVICES

1035 PEACH #301



MARK ANDERSON

805.543.1400
798 PALM ST, SLO, CA 93401
AndersonCommercialRE.com
DRE #00944530

ANDERSON COMMERCIAL

REAL ESTATE SERVICES

1035 PEACH #301



MARK ANDERSON

805.543.1400
798 PALM ST, SLO, CA 93401
AndersonCommercialRE.com
DRE #00944530