



**1411 Marsh Street, Suite 107**

**Property Description:**

City: San Luis Obispo, CA

Size: 936 Square Feet

Price: \$1.65/SF, NNN (\$500/month)

Type: Office

Parking: Covered Underground - Two assigned spaces

Notes: The Marsh Street Pavilions is a multi-tenant elevator served, office building with subterranean parking. The suite has a large reception area, two large private offices, a kitchenette, private restroom and IT room.

**MARK ANDERSON**

805.543.1400

798 PALM ST, SLO, CA 93401

[AndersonCommercialRE.com](http://AndersonCommercialRE.com)

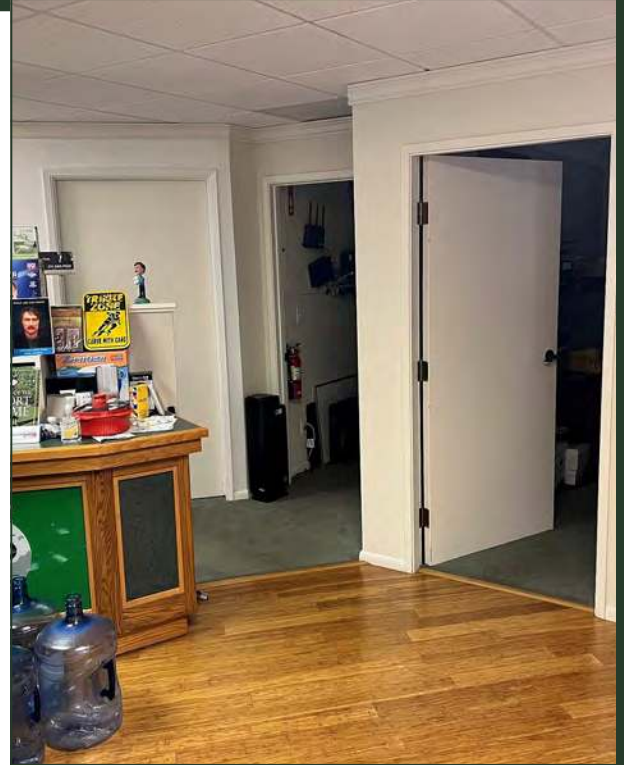
DRE #00944530

# ANDERSON COMMERCIAL

---

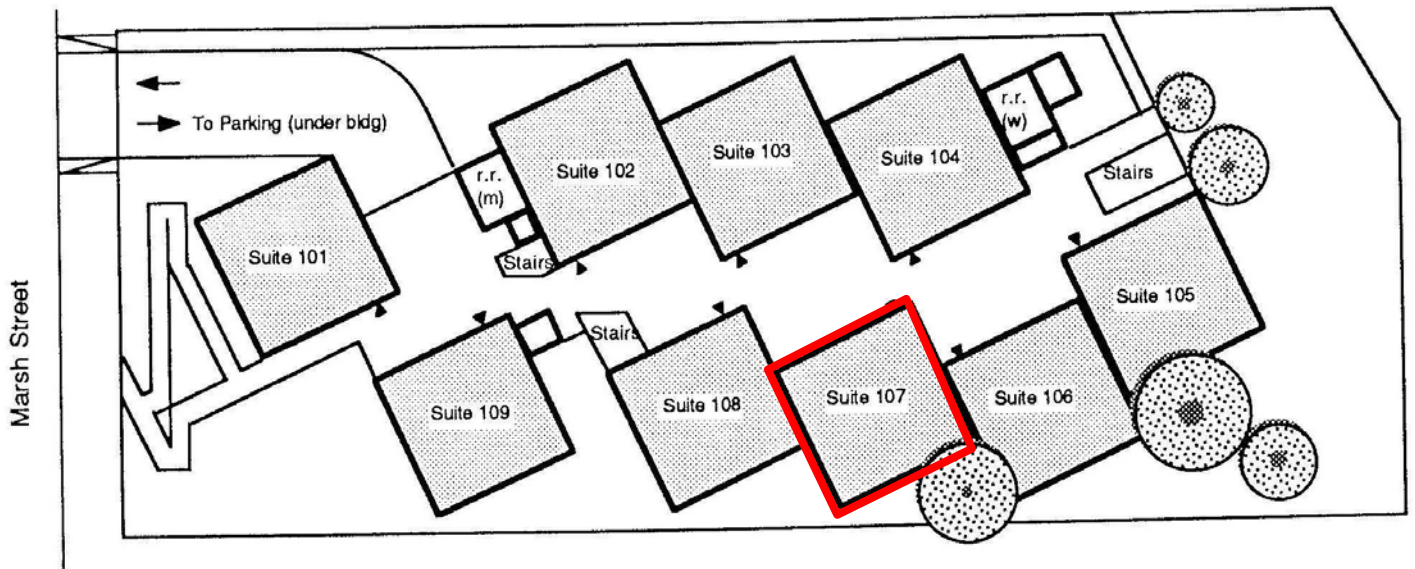
REAL ESTATE SERVICES

# 1411 MARSH #107



**MARK ANDERSON**

805.543.1400  
798 PALM ST, SLO, CA 93401  
[AndersonCommercialRE.com](http://AndersonCommercialRE.com)  
DRE #00944530



**FIRST FLOOR PLAN**

▲ Entry

**MARK ANDERSON**

805.543.1400  
798 PALM ST, SLO, CA 93401  
[AndersonCommercialRE.com](http://AndersonCommercialRE.com)  
DRE #00944530

# ANDERSON COMMERCIAL

REAL ESTATE SERVICES

# 1411 MARSH #107



MARK ANDERSON

805.543.1400  
798 PALM ST, SLO, CA 93401  
[AndersonCommercialRE.com](http://AndersonCommercialRE.com)  
DRE #00944530