



## 1106-1120 Walnut Street

### Property Description:

City: San Luis Obispo, CA

Size: 10,983 Square Feet

Price: \$4,064,000

Type: Office

Notes: This prominently located two-story office building sits on the corner of Santa Rosa Street (Hwy 1) and Walnut Street with immediate access to and from the Hwy 101 north bound on and off ramps. The building is in close proximity to downtown San Luis Obispo and has 35 on-site parking spaces. The first and second floors of the building are demised with elevator access to the second floor. Each floor can be leased separately or can be combined for a single tenant.

Also available For Lease.

MARK ANDERSON  
DEREK SENN

805.543.1400  
798 PALM ST, SLO, CA 93401  
[AndersonCommercialRE.com](http://AndersonCommercialRE.com)  
DRE #00944530

# ANDERSON COMMERCIAL

---

REAL ESTATE SERVICES

# 1106-1120 WALNUT



**MARK ANDERSON**  
**DEREK SENN**

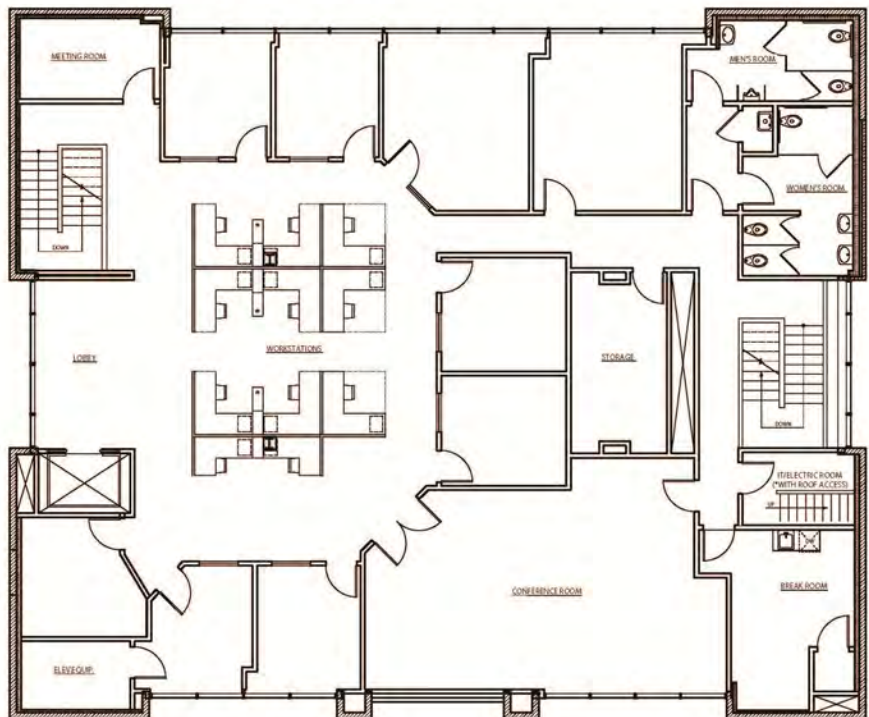
805.543.1400  
798 PALM ST, SLO, CA 93401  
[AndersonCommercialRE.com](http://AndersonCommercialRE.com)  
DRE #00944530



**First Floor**



**Second Floor**



**MARK ANDERSON**  
**DEREK SENN**

805.543.1400  
798 PALM ST, SLO, CA 93401  
[AndersonCommercialRE.com](http://AndersonCommercialRE.com)  
DRE #00944530

# ANDERSON COMMERCIAL

REAL ESTATE SERVICES

# 1106-1120 WALNUT

Excellent Freeway Access



MARK ANDERSON  
DEREK SENN

805.543.1400  
798 PALM ST, SLO, CA 93401  
[AndersonCommercialRE.com](http://AndersonCommercialRE.com)  
DRE #00944530

# ANDERSON COMMERCIAL

REAL ESTATE SERVICES

# 1106-1120 WALNUT



Walking Distance to  
Downtown SLO

## Downtown SLO

MARK ANDERSON  
DEREK SENN

805.543.1400  
798 PALM ST, SLO, CA 93401  
[AndersonCommercialRE.com](http://AndersonCommercialRE.com)  
DRE #00944530