



1305 Marsh Street

Property Description:

City:	San Luis Obispo, CA
Size:	2,641 Square Feet (not including basement)
Price:	\$1,400,000
Type:	Office
Notes:	Fantastic exposure! This historical two story craftsman office sits prominently on the corner of Johnson and Marsh. Also available FOR LEASE at \$1.90/SF, NNN

MARK ANDERSON
DEREK SENN

805.543.1400
798 PALM ST, SLO, CA 93401
AndersonCommercialRE.com
DRE #00944530

ANDERSON COMMERCIAL

REAL ESTATE SERVICES

1305 MARSH



**MARK ANDERSON
DEREK SENN**

805.543.1400
798 PALM ST, SLO, CA 93401
AndersonCommercialRE.com
DRE #00944530

INFORMATION CONTAINED HEREIN HAS BEEN OBTAINED FROM SOURCES WE DEEM RELIABLE. WHILE WE HAVE NO REASON TO DOUBT ITS ACCURACY WE DO NOT GUARANTEE IT.

ANDERSON COMMERCIAL

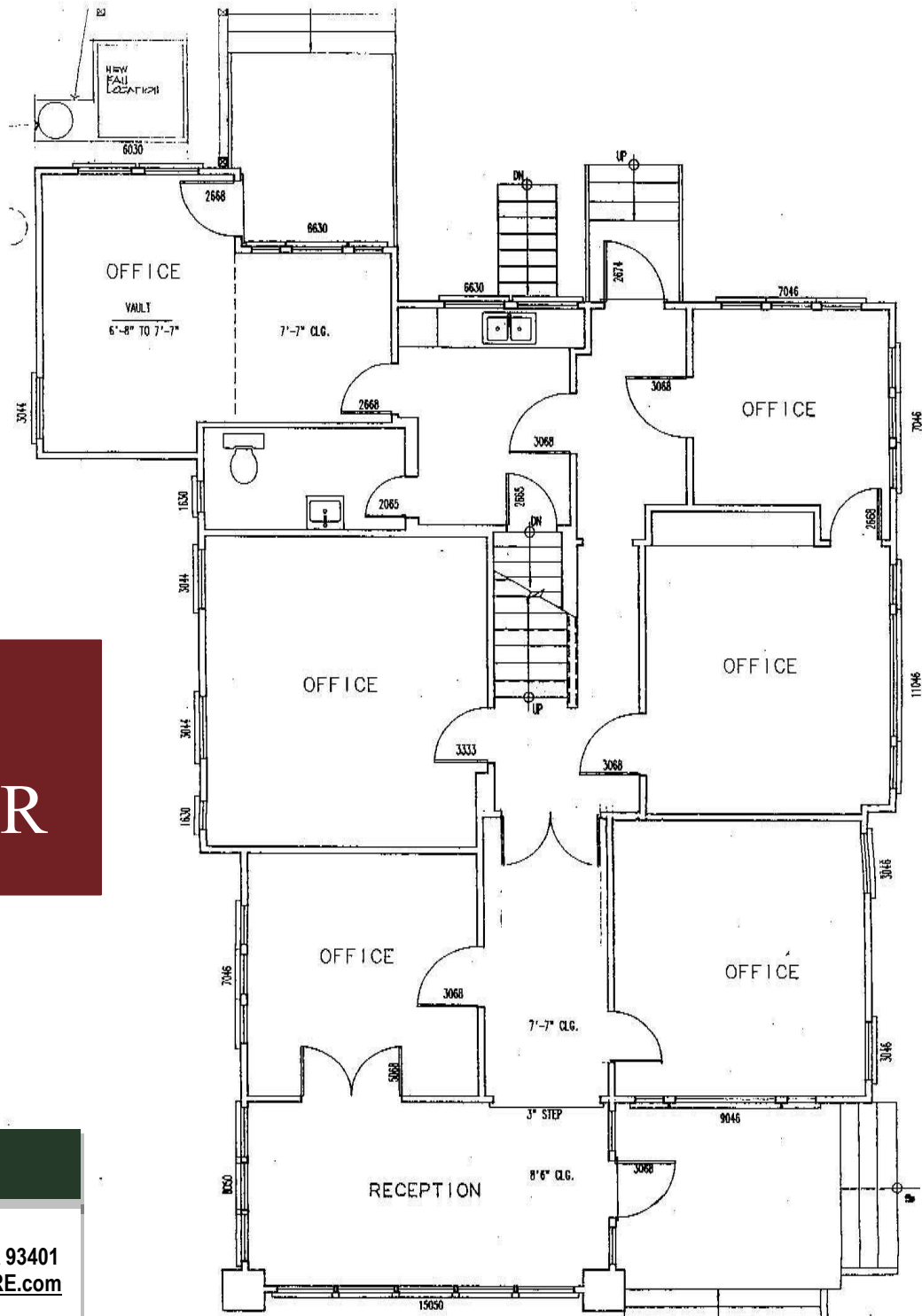
REAL ESTATE SERVICES

1305 MARSH

1ST FLOOR

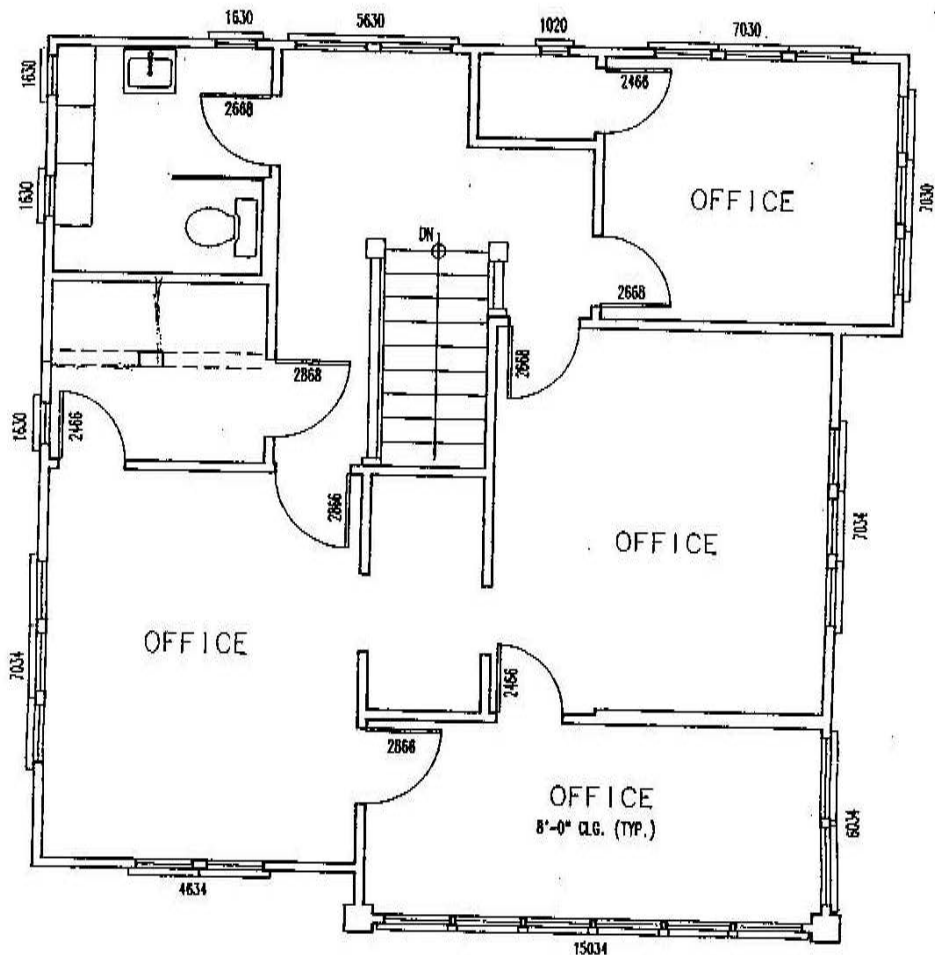
MARK ANDERSON
DEREK SENN

805.543.1400
798 PALM ST, SLO, CA 93401
AndersonCommercialRE.com
DRE #00944530



1305 MARSH

2ND FLOOR



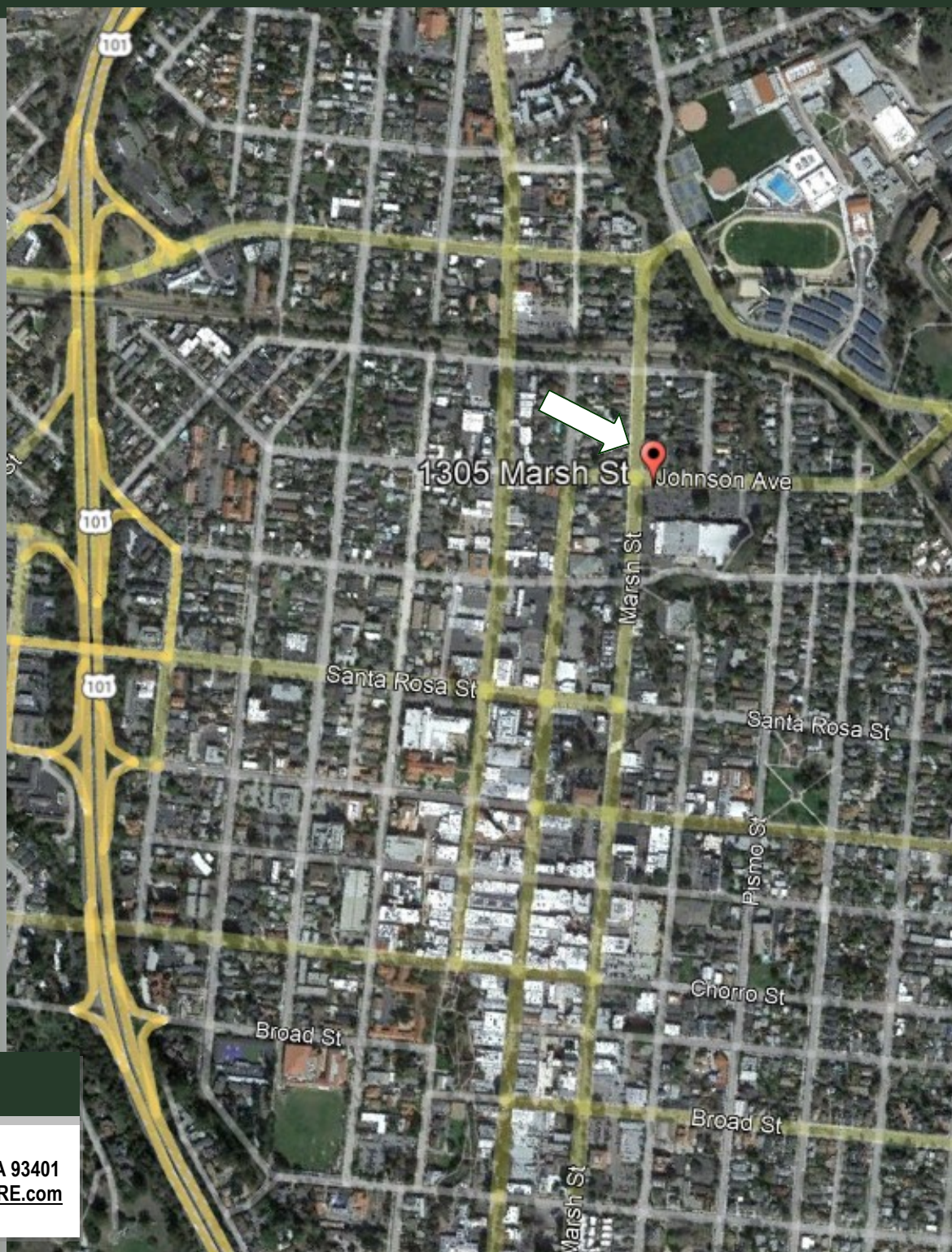
805.543.1400
798 PALM ST, SLO, CA 93401
AndersonCommercialRE.com
DRE #00944530

INFORMATION CONTAINED HEREIN HAS BEEN OBTAINED FROM SOURCES WE DEEM RELIABLE. WHILE WE HAVE NO REASON TO DOUBT ITS ACCURACY WE DO NOT GUARANTEE IT.

ANDERSON COMMERCIAL

REAL ESTATE SERVICES

1305 MARSH



MARK ANDERSON
DEREK SENN

805.543.1400
798 PALM ST, SLO, CA 93401
AndersonCommercialRE.com
DRE #00944530

INFORMATION CONTAINED HEREIN HAS BEEN OBTAINED FROM SOURCES WE DEEM RELIABLE. WHILE WE HAVE NO REASON TO DOUBT ITS ACCURACY WE DO NOT GUARANTEE IT.