



1411 Marsh Street, Suite 107

Property Description:

City:	San Luis Obispo, CA
Size:	936 Square Feet
Price:	\$1.65/SF, NNN (\$550/month)
Type:	Office
Parking:	Covered Underground - Two assigned spaces
Notes:	The Marsh Street Pavilions is a multi-tenant elevator served, office building with subterranean parking. The suite has a large reception area, two large private offices, a kitchenette, private restroom and IT room.

MARK ANDERSON

805.543.1400
798 PALM ST, SLO, CA 93401
AndersonCommercialRE.com
DRE #00944530

ANDERSON COMMERCIAL

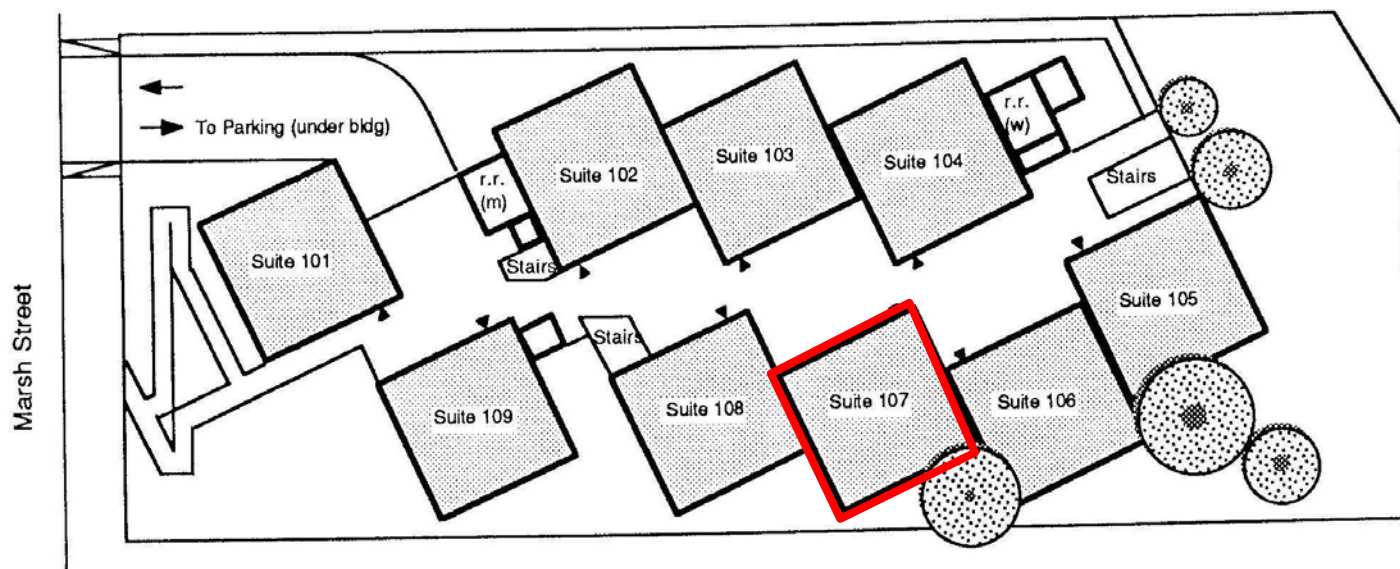
REAL ESTATE SERVICES

1411 MARSH #107



MARK ANDERSON

805.543.1400
798 PALM ST, SLO, CA 93401
AndersonCommercialRE.com
DRE #00944530



FIRST FLOOR PLAN

▲ Entry

MARK ANDERSON

805.543.1400

798 PALM ST, SLO, CA 93401

AndersonCommercialRE.com

DRE #00944530

ANDERSON COMMERCIAL

REAL ESTATE SERVICES

1411 MARSH #107



MARK ANDERSON

805.543.1400
798 PALM ST, SLO, CA 93401
AndersonCommercialRE.com
DRE #00944530

INFORMATION CONTAINED HEREIN HAS BEEN OBTAINED FROM SOURCES WE DEEM RELIABLE. WHILE WE HAVE NO REASON TO DOUBT ITS ACCURACY WE DO NOT GUARANTEE IT.