



## 3599 Sueldo, Suite 100

### Property Description:

City: San Luis Obispo, California

Size: 1,574 Square Feet

Price: \$1.55/Square Foot, NNN (\$0.40)

Type: Office

Parking: Ample On-Site

Notes: Very nice open office space in a concrete tilt-up project with excellent on-site parking. The project is located at the intersection of Granada and Sueldo Streets. The suite has two private offices, a large open work area, a kitchenette, and a private restroom.

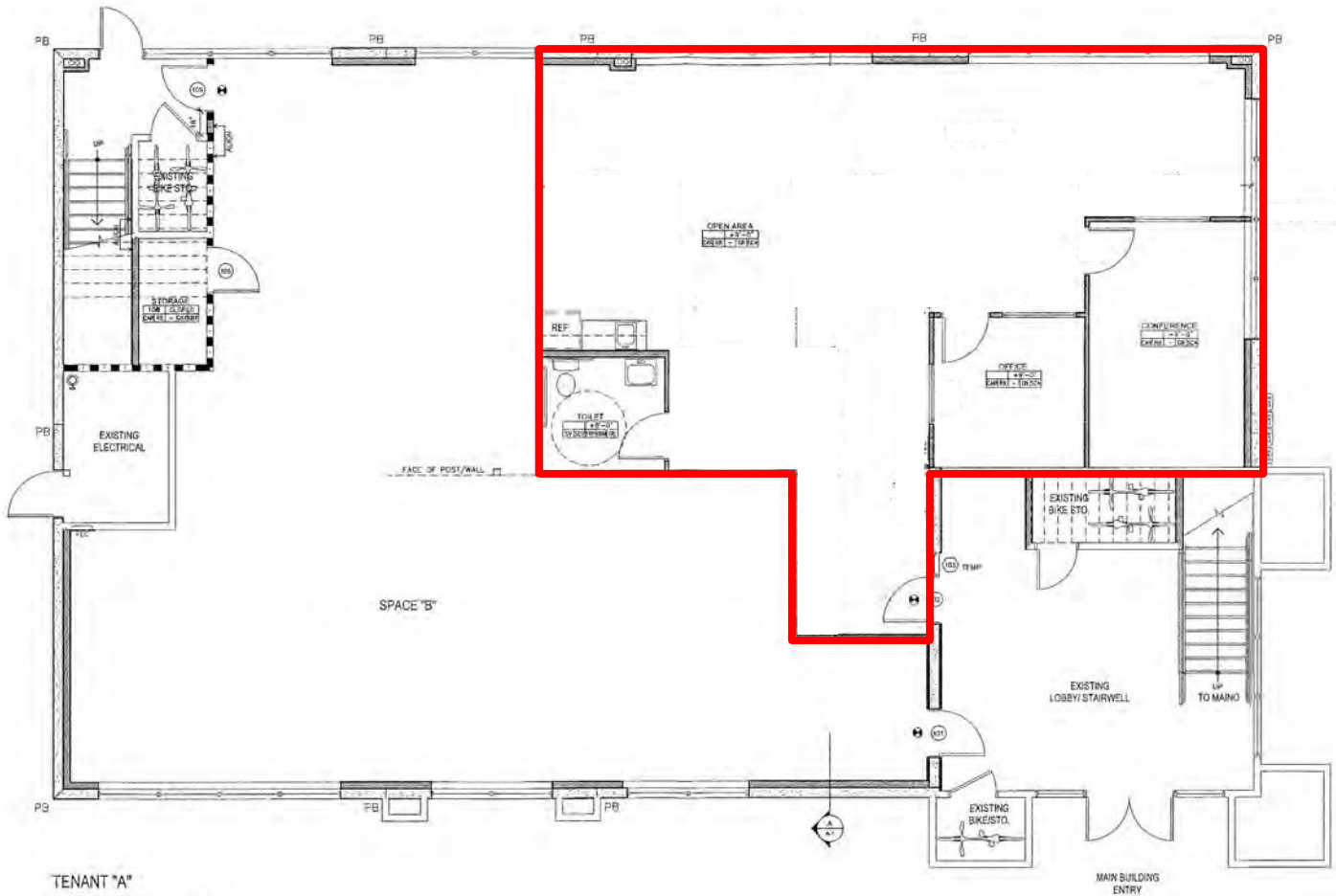
**MARK ANDERSON**

805.543.1400  
798 PALM ST, SLO, CA 93401  
[AndersonCommercialRE.com](http://AndersonCommercialRE.com)  
DRE #00944530

# ANDERSON COMMERCIAL

REAL ESTATE SERVICES

# FOR LEASE



MARK ANDERSON

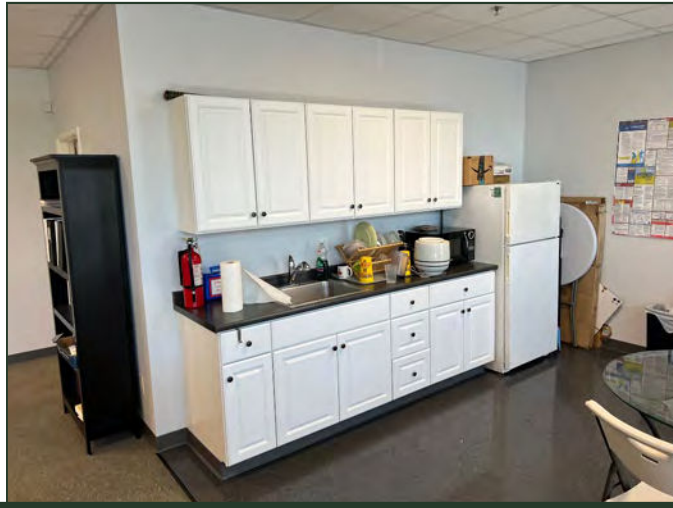
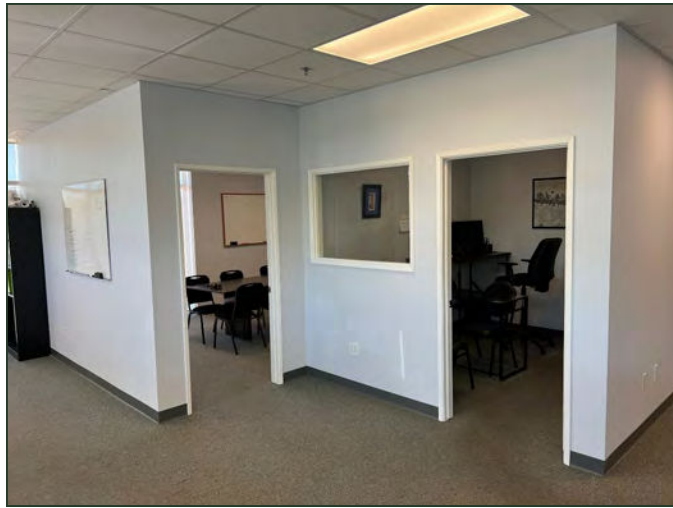
805.543.1400  
798 PALM ST, SLO, CA 93401  
[AndersonCommercialRE.com](http://AndersonCommercialRE.com)  
DRE #00944530

# ANDERSON COMMERCIAL

---

REAL ESTATE SERVICES

# FOR LEASE



**MARK ANDERSON**

805.543.1400  
798 PALM ST, SLO, CA 93401  
[AndersonCommercialRE.com](http://AndersonCommercialRE.com)  
DRE #00944530