



1319 Marsh Street

Property Description:

City: San Luis Obispo, CA

Size: 3,085 SF, 3,595 SF, and 6,680 SF

Price: \$2.75/Square Foot, Gross

Type: Office

Notes: Two newly remodeled suites. Each suite has two restrooms, a kitchenette, abundant natural light, seven glass offices, a conference room, an open work area, a reception area, and plentiful on-site parking.

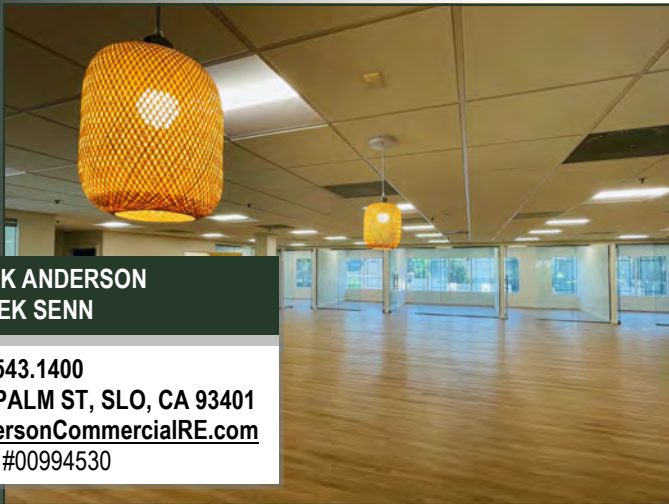
MARK ANDERSON
DEREK SENN

805.543.1400
798 PALM ST, SLO, CA 93401
AndersonCommercialRE.com
DRE #00994530

ANDERSON COMMERCIAL

REAL ESTATE SERVICES

1319 MARSH

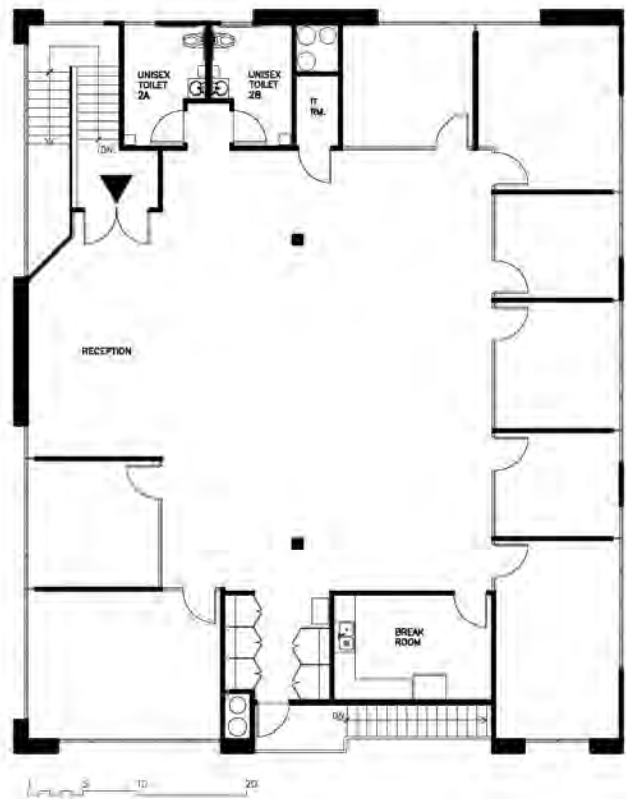


MARK ANDERSON
DEREK SENN

805.543.1400
798 PALM ST, SLO, CA 93401
AndersonCommercialRE.com
DRE #00994530



1st FLOOR PLAN



2nd FLOOR PLAN

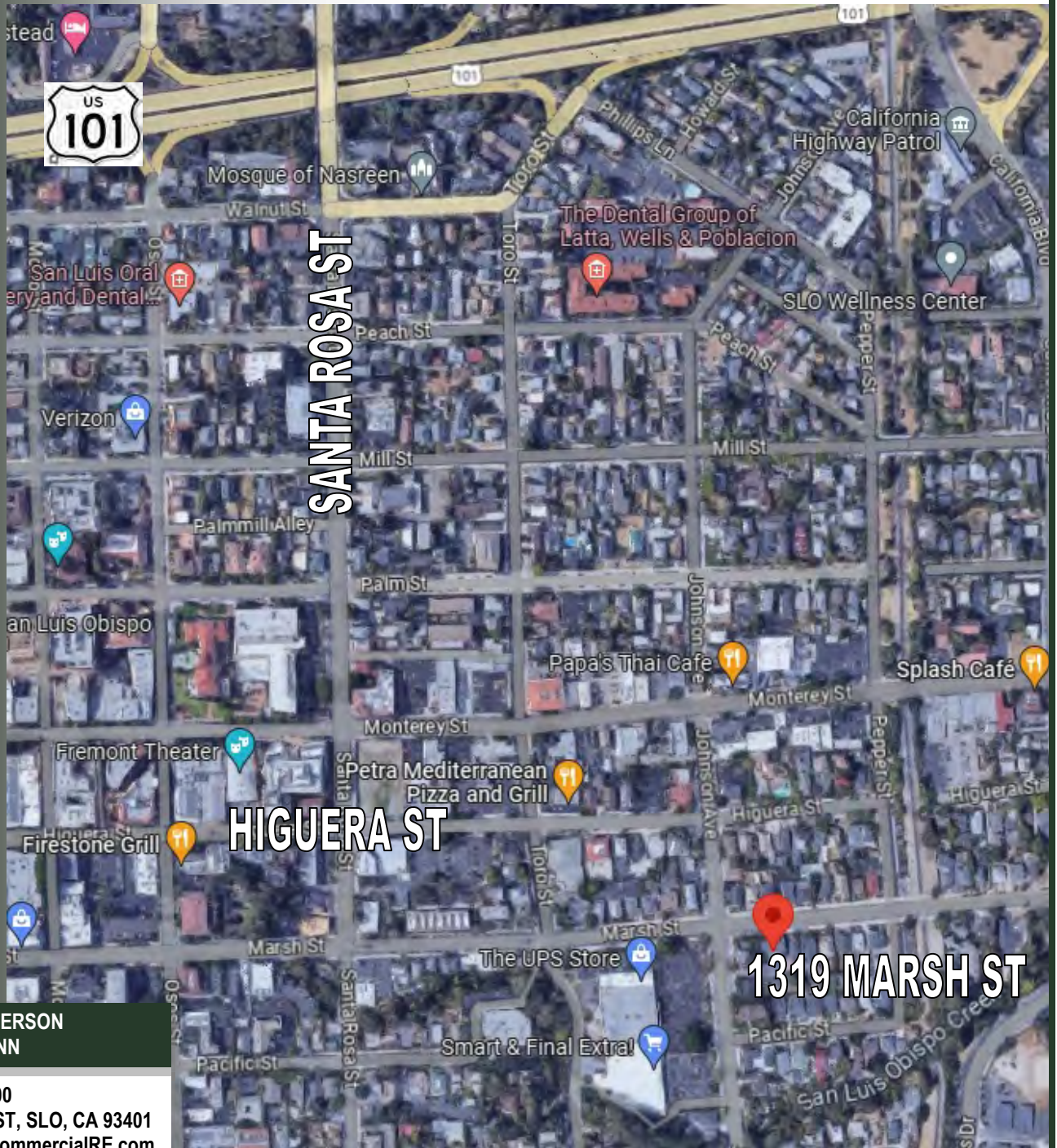
MARK ANDERSON
DEREK SENN

805.543.1400
798 PALM ST, SLO, CA 93401
AndersonCommercialRE.com
DRE #00994530

ANDERSON COMMERCIAL

REAL ESTATE SERVICES

1319 MARSH



MARK ANDERSON
DEREK SENN

805.543.1400
798 PALM ST, SLO, CA 93401
AndersonCommercialRE.com
DRE #00994530