



1319 Marsh Street, Suite 200

Property Description:

City: San Luis Obispo, CA

Size: 3,595 Square Feet

Price: \$2.75/Square Foot, Gross

Type: Office

Notes: A newly remodeled suite consisting of two restrooms, a kitchenette, abundant natural light, seven glass offices, a conference room, an open work area, a reception area, and plentiful on-site parking.

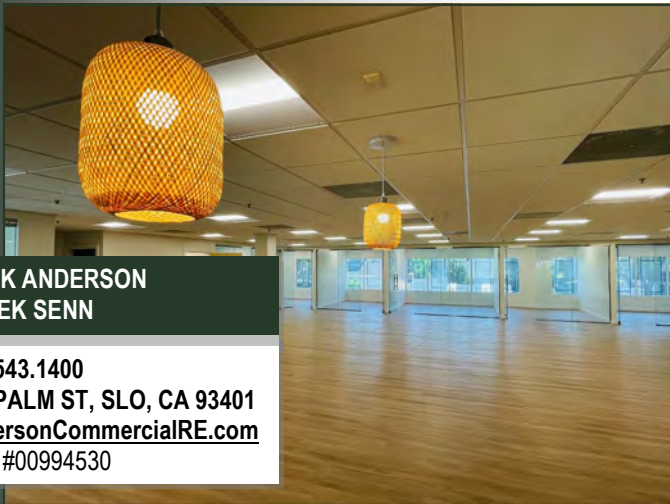
MARK ANDERSON
DEREK SENN

805.543.1400
798 PALM ST, SLO, CA 93401
AndersonCommercialRE.com
DRE #00994530

ANDERSON COMMERCIAL

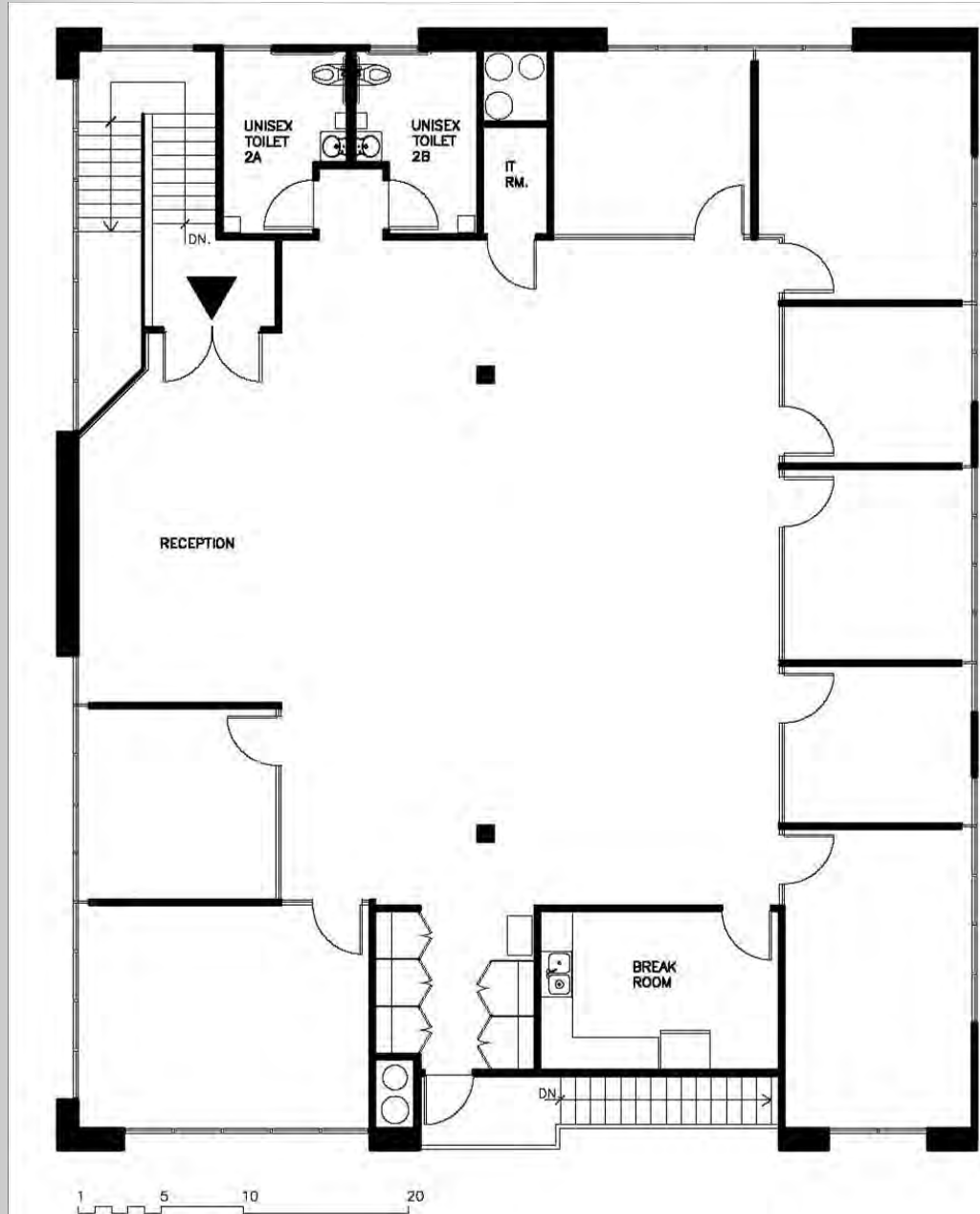
REAL ESTATE SERVICES

1319 MARSH #200



**MARK ANDERSON
DEREK SENN**

805.543.1400
798 PALM ST, SLO, CA 93401
AndersonCommercialRE.com
DRE #00994530



MARK ANDERSON
DEREK SENN

805.543.1400
798 PALM ST, SLO, CA 93401
AndersonCommercialRE.com
DRE #00994530

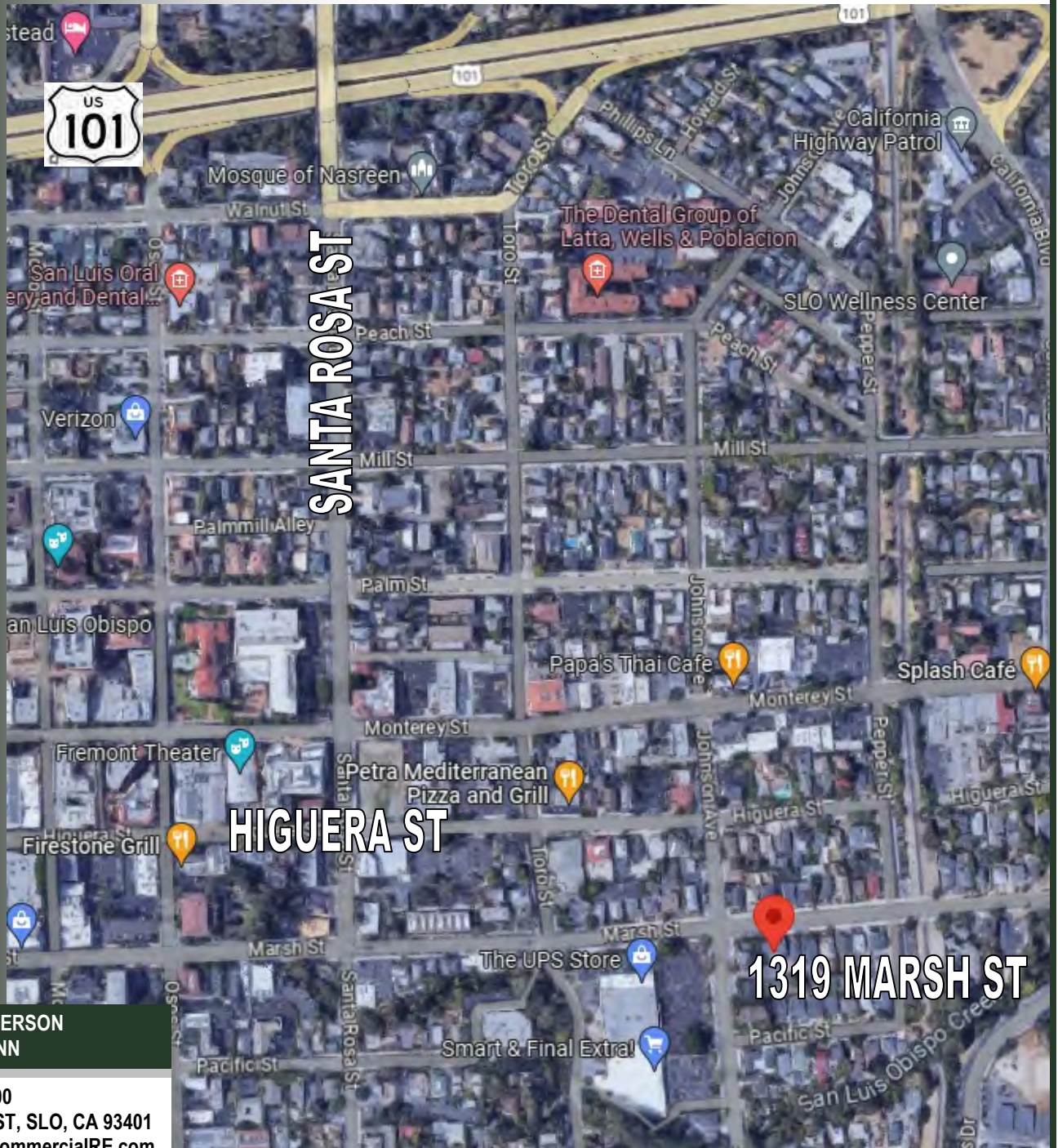


2nd FLOOR PLAN

ANDERSON COMMERCIAL

REAL ESTATE SERVICES

1319 MARSH #200



MARK ANDERSON
DEREK SENN

805.543.1400
798 PALM ST, SLO, CA 93401
AndersonCommercialRE.com
DRE #00994530