



Farmhouse Lane near Broad Street

Property Description:

- City: San Luis Obispo, CA
- Size: 42,690+/- SF defined as parcel 2 of vesting tentative parcel map 21-0010
- Price: **\$895,000** ~~-\$1,150,000~~
- Zoning: CS (Commercial Service)
- Notes: Parcel 1 with Broad Street frontage will be developed as a Conserv Fuel station and convenience store.

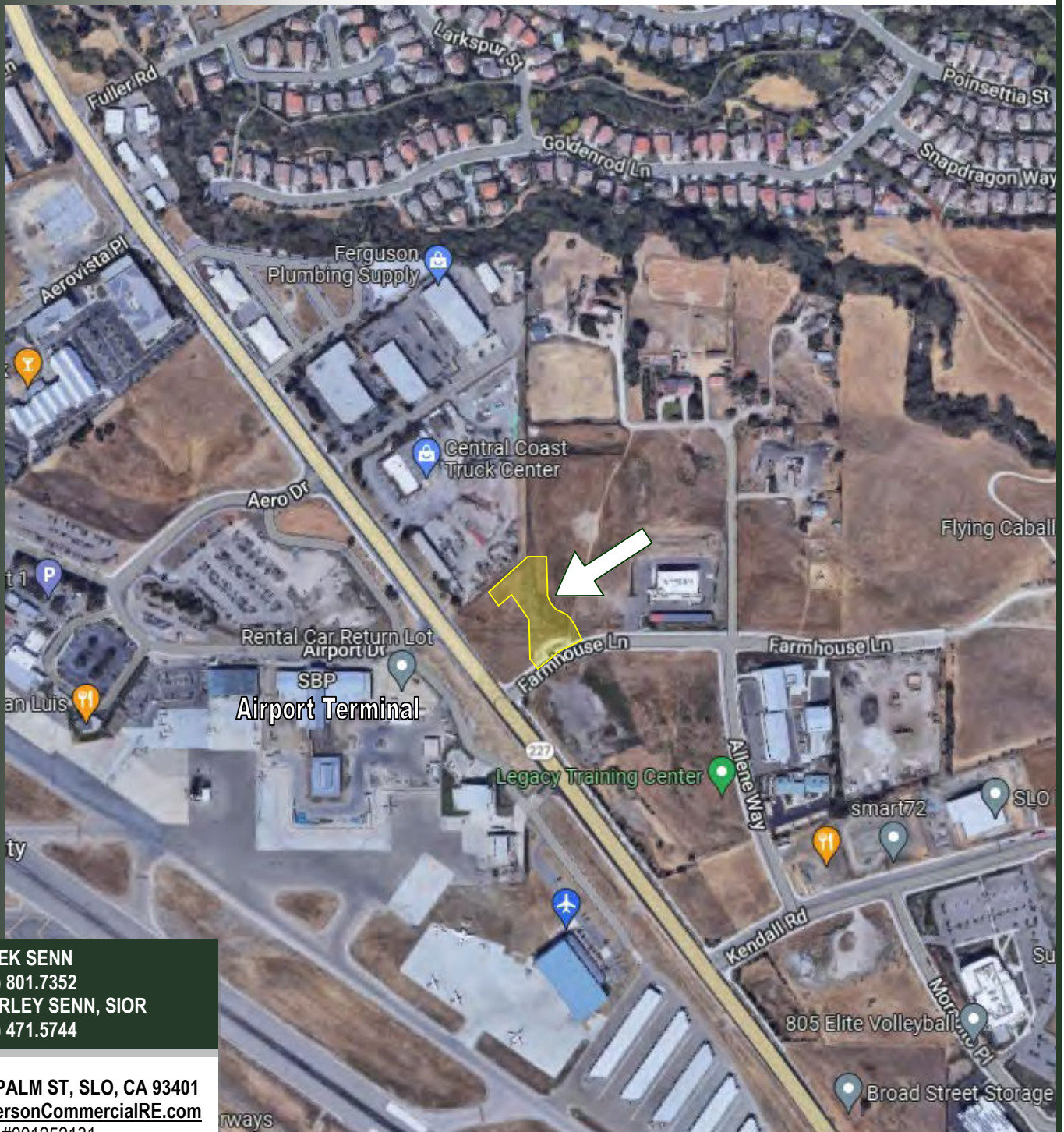
DEREK SENN
(805) 801.7352
CHARLEY SENN, SIOR
(805) 471.5744

798 PALM ST, SLO, CA 93401
AndersonCommercialRE.com
DRE #001252131

ANDERSON COMMERCIAL

REAL ESTATE SERVICES

FARMHOUSE LAND



DEREK SENN
(805) 801.7352
CHARLEY SENN, SIOR
(805) 471.5744

798 PALM ST, SLO, CA 93401
AndersonCommercialRE.com
DRE #001252131