



1551 Bishop Street, Suite B-240

Property Description:

City: San Luis Obispo, CA

Size: 2,400 Square Feet

Price: \$1,250,000

Type: Medical Office

Notes: A fully leased medical office condo in the Bishop Medical Plaza. A fantastic investment opportunity.

Tenant: Community Health Centers

Rent: \$3.50/SF, NNN (with annual CPI increases)

Lease Exp: April 30, 2028

CAP Rate: 8%

DEREK SENN

805.543.1400

798 PALM ST, SLO, CA 93401

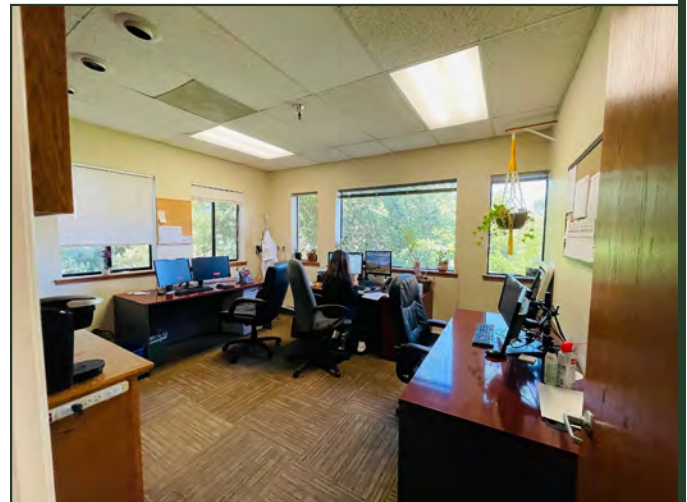
AndersonCommercialRE.com

DRE #001252131

ANDERSON COMMERCIAL

REAL ESTATE SERVICES

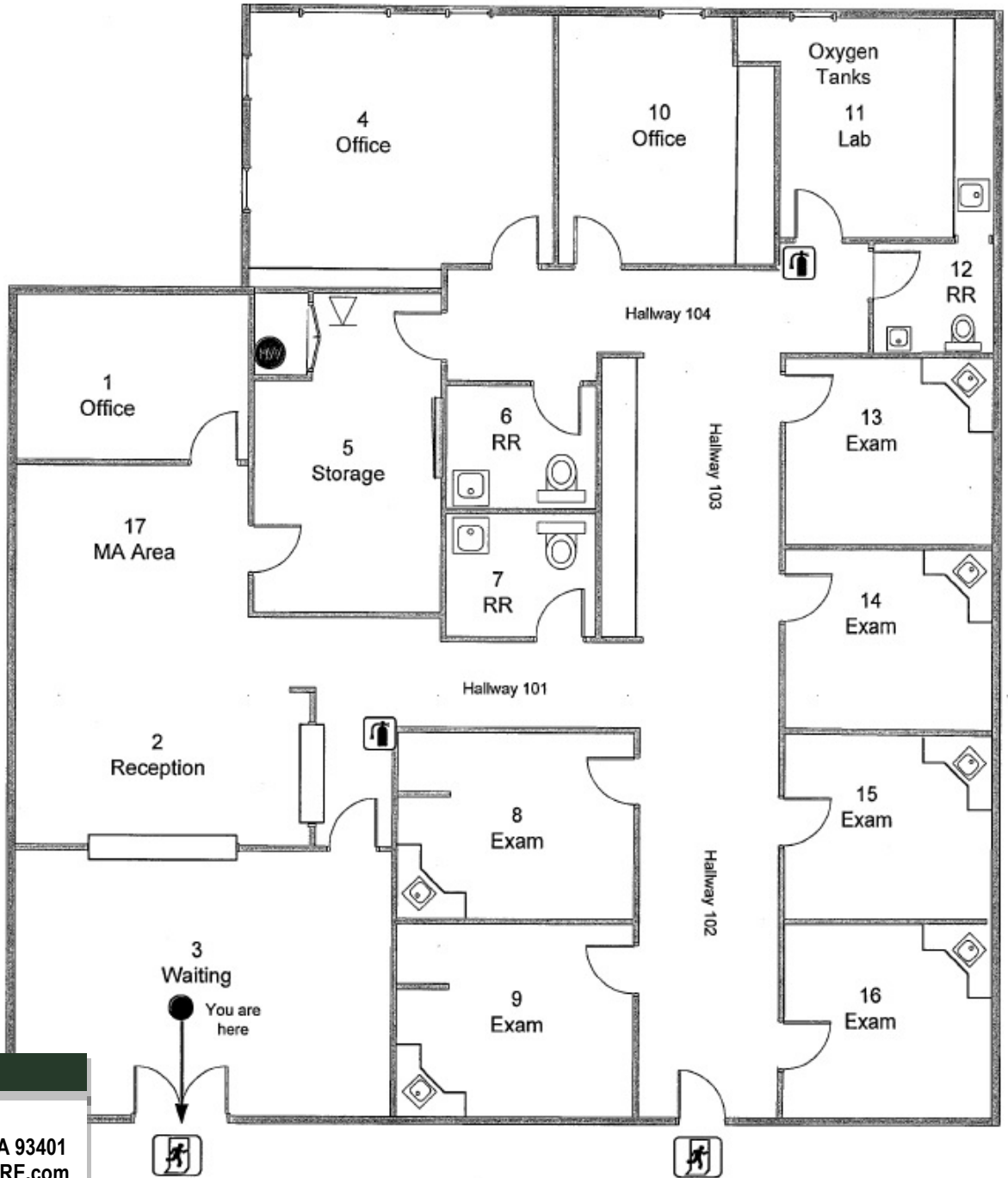
1551 BISHOP #240



DEREK SENN

805.543.1400
798 PALM ST, SLO, CA 93401
AndersonCommercialRE.com
DRE #001252131

CommunitH Health Centers
 1551 Bishop St. B240
 San Luis Obispo, CA 93401



DEREK SENN

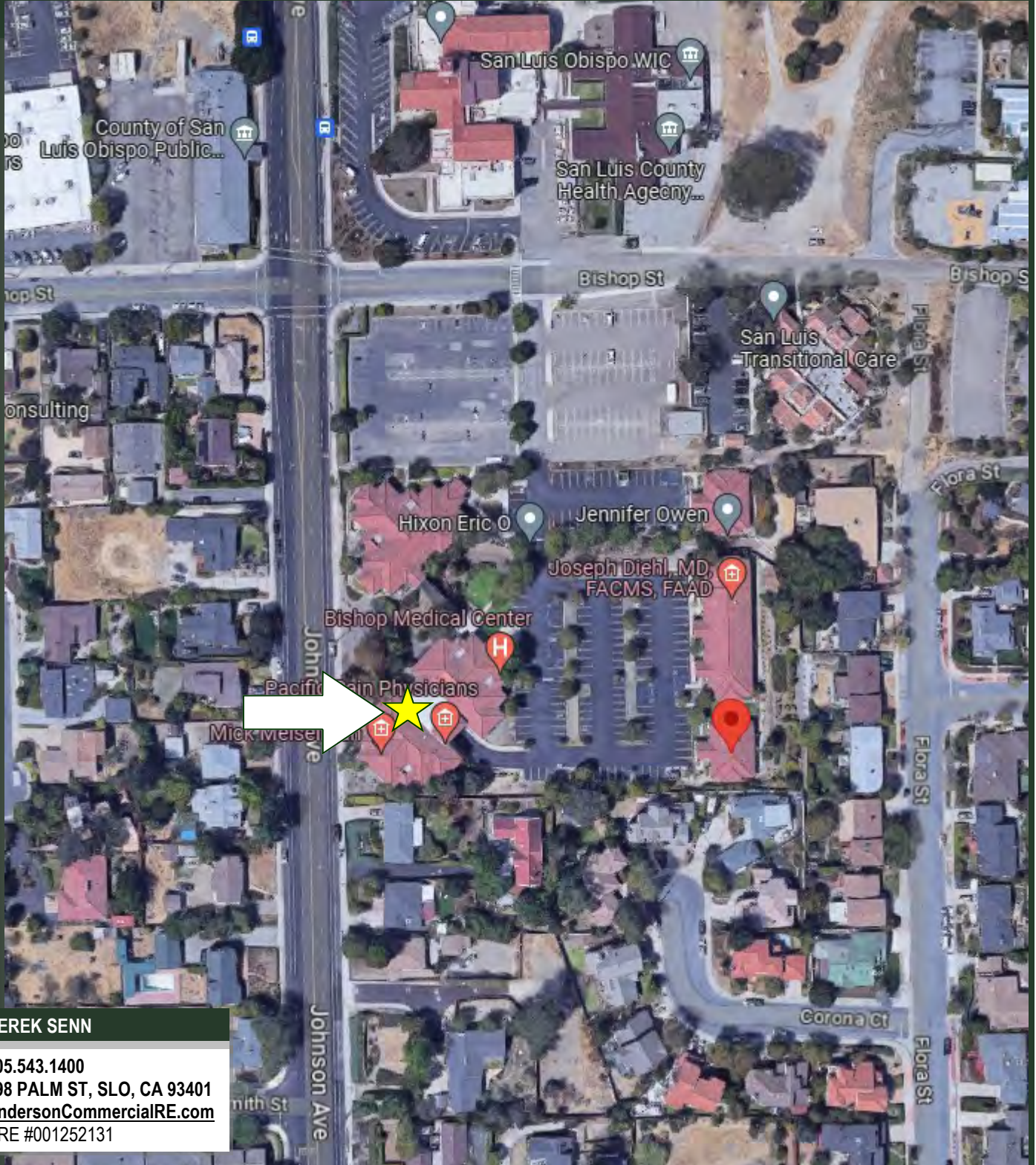
805.543.1400
 798 PALM ST, SLO, CA 93401
 AndersonCommercialRE.com
 DRE #001252131

Gas & Water shut-off on back wall of Suite B-260

ANDERSON COMMERCIAL

REAL ESTATE SERVICES

1551 BISHOP



DEREK SENN

805.543.1400
798 PALM ST, SLO, CA 93401
AndersonCommercialRE.com
DRE #001252131