



**1551 Bishop Street, Suite 110**

**Property Description:**

City: San Luis Obispo, CA

Size: 3,209 Square Feet

Price: \$2.75/Square Foot, NNN

Type: Medical Office

Notes: A well-appointed medical office suite in turn-key condition. The complex has plentiful parking for medical uses.

**DEREK SENN**

805.543.1400  
798 PALM ST, SLO, CA 93401  
[AndersonCommercialRE.com](http://AndersonCommercialRE.com)  
DRE #001252131

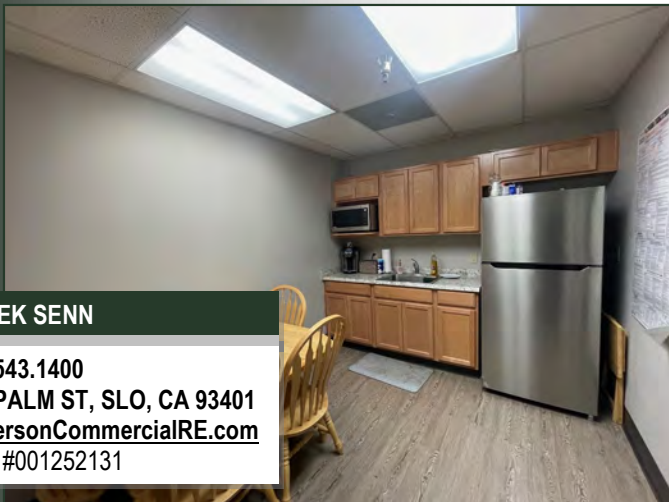


# ANDERSON COMMERCIAL

---

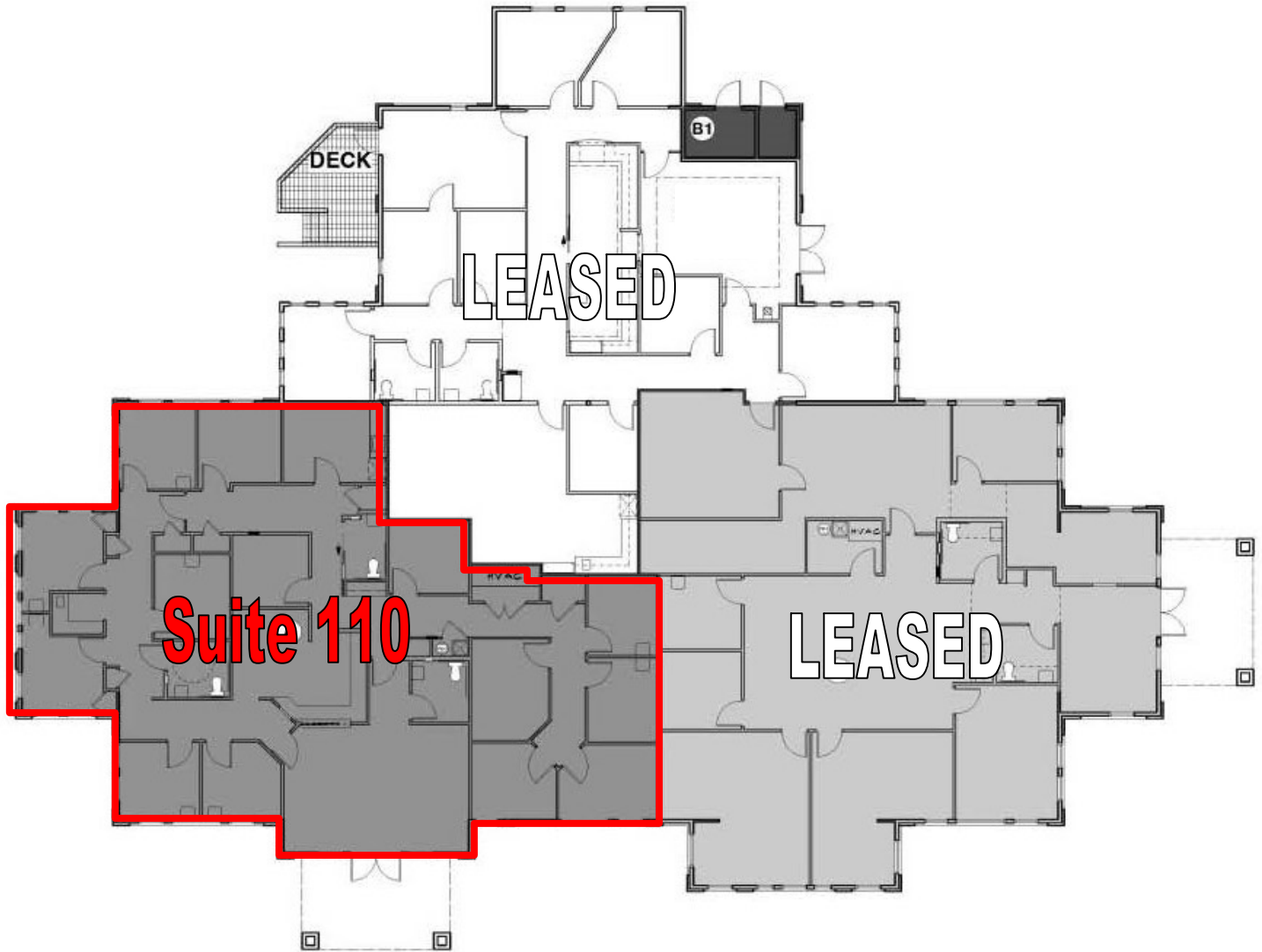
REAL ESTATE SERVICES

# 1551 BISHOP #110



**DEREK SENN**

805.543.1400  
798 PALM ST, SLO, CA 93401  
[AndersonCommercialRE.com](http://AndersonCommercialRE.com)  
DRE #001252131



**DEREK SENN**

805.543.1400  
798 PALM ST, SLO, CA 93401  
[AndersonCommercialRE.com](http://AndersonCommercialRE.com)  
DRE #001252131



# ANDERSON COMMERCIAL

REAL ESTATE SERVICES

# 1551 BISHOP #110



**DEREK SENN**

805.543.1400  
798 PALM ST, SLO, CA 93401  
[AndersonCommercialRE.com](http://AndersonCommercialRE.com)  
DRE #001252131