



1411 Marsh Street, Suite 101
Marsh Street Pavilions

Property Description:

City: San Luis Obispo, California

Size: 936 Square Feet

Price: \$1.75/SF, NNN (\$0.67)

Type: Office

Notes: The Marsh Street Pavilions is a multi-tenant, elevator served, office building with subterranean parking. The available suite is a recently renovated, freestanding space that fronts Marsh Street, and comes with two reserved parking spots.

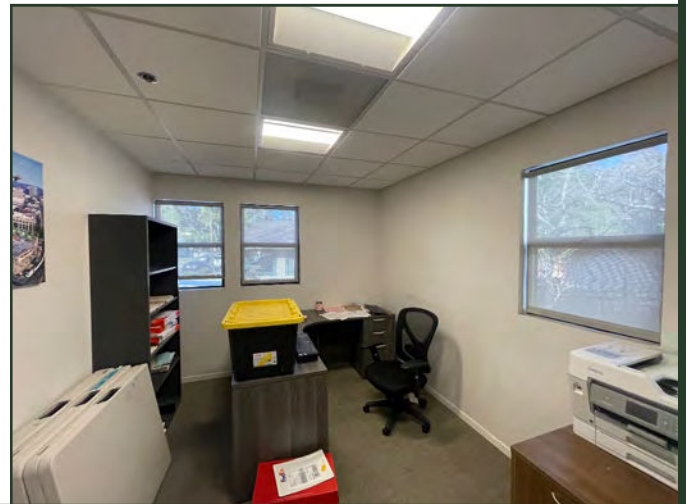
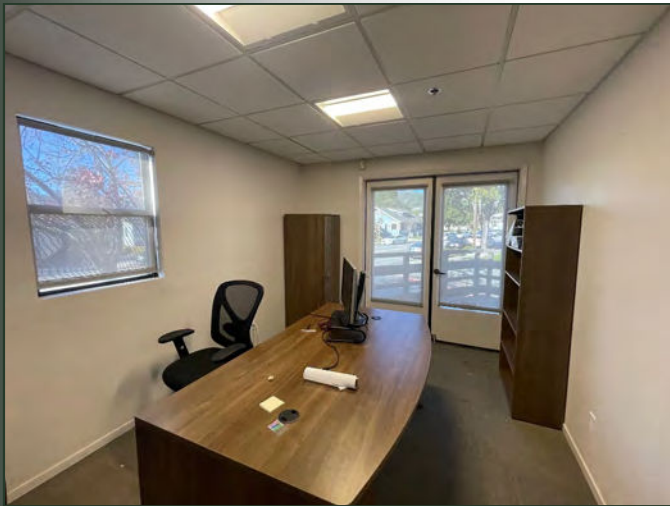
MARK ANDERSON
DEREK SENN

805.543.1400
798 PALM ST, SLO, CA 93401
AndersonCommercialRE.com
DRE #00944530

ANDERSON COMMERCIAL

REAL ESTATE SERVICES

1411 MARSH #101



MARK ANDERSON
DEREK SENN

805.543.1400
798 PALM ST, SLO, CA 93401
AndersonCommercialRE.com
DRE #00944530